

# Leavesden Country Park

Incorporating the Horses' Field and East Lane Cemetery

## Management Plan 2021-2031



## Foreword

## Leader of the Council Statement

Dear Residents and Park Users,

I am pleased to share with you the management plan for Leavesden Country Park, which now incorporates the Horses' Field. This plan has been developed by Three Rivers District Council, with input from your local ward councillors and consultation from local residents as part of the annual Visitor Satisfaction Survey.

We are proud of our green spaces and in particular, Leavesden Country Park and the recent work undertaken as part of the National Lottery Heritage Fund project. We remain committed to doing all we can to make our parks the very best they can be.

This park is unique in what it has to offer and celebrate: a stunning heritage sculpture trail, celebrating the diverse history of the Leavesden Hospitals, Leavesden Aerodrome and Leavesden Film Studios, an exciting themed play area and sensory garden, along with an educational building – Leavesden HIVE, dedicated to celebrating the site's rich wildlife and heritage, home to the Park Ranger and the Leavesden Hospital History Association. All of this, tied in with a welcoming café, Leavesden Cycle Hub, the YMCA facilities and the restored East Lane Cemetery makes for a remarkable visit.

Leavesden Country Park has been nationally recognised through the Green Flag Award scheme, and we continue to work with our Friends Of group to maintain and improve the park for the local community and visitors alike.

This management plan looks to show how the Council is meeting and addressing the criteria of the Green Flag Award scheme and sets out the priorities for action and improvement of the park over the coming years.

I hope you find this document useful and I would encourage you to make the most of your local park. If you want to get more involved in the future management of the park why not consider joining our Friends group, attending an event or simply just send us some of your thoughts?

Thank you,

**Sarah Nelmes**

Cllr Sarah Nelmes  
Leader of Three Rivers District Council



# Contents

## Welcome and Introduction

page 2

## Background and History of the Park

page 3

## Achievements over the last five years

page 4-5

## What can be found in the park?

page 6-28

- Recreational & Public facilities
- Heritage and Restoration
- Conservation, Habitats and Wildlife
- The Park Community
- Education and Activities
- Marketing and Communication

## Future of the Park

page 29

## How will the ten year vision for the park be delivered?

page 30-42

- Welcoming Facilities
- An Award Winning Park
- Creating Biodiversity and Sustainable Environments
- Friendly Park Community
- Diverse and Educational Activity Programme

## Resources and Funding

page 43-46

## Reviewing and Managing

page 47

## Appendices

page 48-89

- Mapping
- Maintenance Schedule
- Ten Year Capital Programme
- Wider context: Policies and Strategies that relate to the country Park
- Licences and tenants within the country park
- Health and Safety: building maintenance schedule and relevant risk assessments
- Essential Reading - National Lottery Heritage Fund Activity Plan and Conservation Plan

## Welcome and Introduction

It is recommended to read this document in conjunction with the appendices and in particular, Appendix G Essential Reading.

### Vision Statement

***“For people to come as a visitor and leave as a friend, having explored the wildlife havens, discovered beautiful landscapes and learned about the heritage of the site.”***

Leavesden Country Park is a beautiful destination park, filled with heritage, in the heart of Leavesden. The rejuvenated park, with contemporary signage and street furniture, provides a home to Leavesden HIVE (Heritage, Information, Volunteers and Education; an educational facility), full time Park Ranger, a ‘Friends of’ Leavesden Country Park group and Leavesden Hospital History Association. Respectfully restored features include the hospital railings, Font, Edwardian Garden and steps and a peaceful Remembrance Garden, paying respect to the people that worked here and the hospitals. A stunning Heritage Trail has been installed and interpretation boards detail the rich heritage of the area – the Leavesden Hospitals, Aerodrome and Film Studios. Recent restoration and conservation work to East Lane Cemetery means that the community are also able to visit the hospitals’ Victorian cemetery.

The park is a biodiversity haven for wildlife, boasting an impressive collection of specimen trees and wildflower meadows and this has now extended to include the Horses’ Field, which is situated on the southern side of Langley Lane. The park offers both woodlands, with an accessible woodland walk and grasslands amongst rolling hectares. Additional interpretation boards are found across the park to inform visitors on

the biodiversity of woodlands and grasslands, along with the wildlife and historical heritage of Little Blossoms Orchard, East Lane Cemetery and the Edwardian Garden.

To enhance the natural habitats within the site, bug hotels, hibernacula, hedgehog homes, bee baths, bat and bird boxes have been created to boost the biodiversity of the site. The Heritage Orchard, Little Blossom Orchard and wildflower meadows offer a rich habitat for pollinators. Along with the park and woodland areas, visitors can also enjoy the Woodlands Café, three exciting play spaces, a parkour area, a cycle hub, inclusive sensory garden, Charter’s Day Nursery, YMCA Woodlands Community Facility an outdoor gym and outdoor sports areas.

All of this work is as a result of community engagement since 2015 to improve the area and was made possible through the National Lottery Heritage Fund, Three Rivers District Council and support from Warner Bros. Studios Leavesden. Accessible, well maintained parks and open spaces have never been more vital to the health and wellbeing of

individuals than during the COVID 19 Pandemic. During a survey in 2020 of people using Leavesden Country Park, over 80% said that being able to use the park was either very important or important to their health and wellbeing and 98% of people said using the park enhanced their quality of life. All measures to ensure the public’s safety have been followed in line with Government guidance and restrictions.

Ensuring that the Council has a clear and effective management plan in place for the park over the next 10 years, will continue to ensure that this is a space that can be used by all of the local community for their own physical and mental wellbeing. Three Rivers District Council, along with its partners, is delighted to deliver the vision of shared heritage and appreciation of Leavesden Country Park and the Horses’ Field, and invite the community to come as a visitor and leave as a friend.



## Background and History of the Park

Leavesden Country Park and the Horses' Field is a celebration of the area's rich heritage, social history and natural environment.

Covering 38 hectares, the park consists of three connected sites: East Lane Cemetery at the northern end of the site, the main parkland area of Leavesden Country Park (divided by College Road) and the Horses' Field at the southern end (divided by Langley Lane).

### Background

In the late 1800s the streets of London were struggling to cope with the growing issues of homelessness, abandoned children and deprivation. The Metropolitan Poor Act Amendment of 1867 was introduced and a new asylum in Leavesden was commissioned, along with the St Pancras Orphanage/Workhouse, which opened in October 1870. The asylum covered a vast 34 hectares of land, north and south of what is now College Road. It included 17 hectares of farmland, as well as textile shops, kitchens and tannery workshops, allowing them to be largely self-sufficient. By the 1950s, there were over 3,500 patients and a staff of 1,200.

Following the closure of the St Pancras Orphanage/Workhouse in 1932, this part of the site continued to play an important role in health care. In 1939, the Canadian RAF built the Canadian Hospital for the care of their wounded soldiers. Upon its closure in 1946 it became the Abbots Langley General Hospital; a dedicated geriatric hospital.

This, along with the Leavesden Hospital closed its doors for good in 1995. At this time, 23 hectares of the site were retained by Three Rivers

District Council and renamed as Leavesden Country Park.

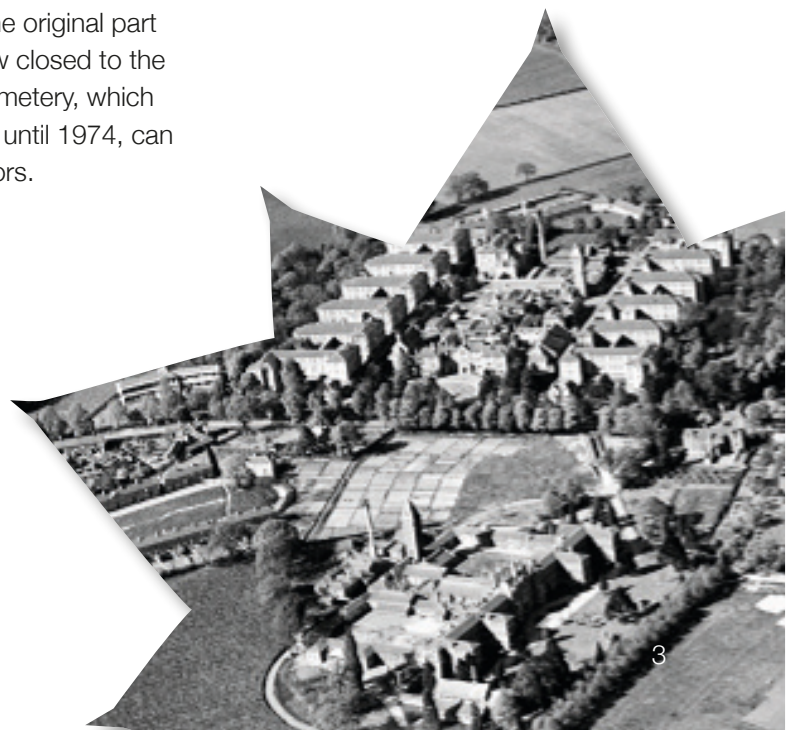
The park also celebrates the heritage of the surrounding areas within Leavesden, including the Leavesden Aerodrome, instrumental to the success of World War 2 and the Leavesden Film Studios, producing multi-million pound films and a destination tourist attraction – Warner Bros. Studio Tour – The Making of Harry Potter.

East Lane Cemetery was the Leavesden Asylum/Hospitals cemetery, and dates back to 1870. Restoration work in 2020 included the uncovering of 510 grave markers and the resetting of 15 headstones. The tree canopy was been lifted, the lychgate restored, the Victorian irrigation system preserved and the paths resurfaced. A central memorial wall has been thoughtfully designed to reflect the architecture of the Leavesden Hospital buildings. This pays homage to those who have been laid to rest within East Lane Cemetery. The wall also displays a memorial stone to remember those staff members who gave their lives in two World Wars. The original part of the cemetery is now closed to the public but the new cemetery, which was in use from 1905 until 1974, can be enjoyed by all visitors.

The Horse's Field originally comprised four fields with a small wood and was arable farmland owned by Elizabeth Sherwood (1839 Tithe Map). In the 1930s it became part of the greater Leavesden Aerodrome site. Local knowledge suggests it was used as a "tip" during wartime aircraft production at the aerodrome, this was when the war effort was at its height and environmental standards much lower than today. The land then passed into the ownership of the Millennium Group, who first developed the film studios on the site. Eventually the main site was taken over by Warner Bros. and the Horse's Field was passed into the ownership of Three Rivers District Council.

The Horses' Field was formally adopted by Three Rivers District Council in 2011 as part of the Leavesden Park development, which included new housing, play areas, community amenity and commercial properties.

Leavesden Country Park, East Lane Cemetery and the Horses' Field are now maintained and monitored under this one Management Plan.



## Achievements over the last five years

Progress since the Leavesden Country Park Management Plan 2015 – 2020 and the Horses' Field Green Space Action Plan 2015 – 2025, has been extensive with the delivery of new and rejuvenated facilities, sympathetic restoration works and conservation management.

With significant investment in the park from Three Rivers District Council, Warner Bros. Studios Leavesden, National Lottery Heritage Fund, YMCA and Sport England, it has moved from a dog walking space into a destination attraction.

There have been several areas across the site to benefit from improved facilities. These are the Woodlands Café, Leavesden Cycle Hub, Leavesden HIVE, Heritage Trail, East Lane Lychgate and Cemetery, the Orphanage Railings, the Font, Remembrance Garden, accessible woodland path, The Garden, Multi Use Games Area (MUGA), 3G Sports pitches, Tennis Courts, park maps, two play areas, a parkour area, street furniture, including sustainable lighting, interpretation boards, picnic area, benches, oak cube seats and site wide signage.

A sense of arrival has been achieved with site wide branding throughout the park, pulling all providers together. This has improved visitor experience and flow across the park, which was previously unclear as customers had fed back that they did not realise the scale/amenities within the park. In practical terms, the significant developments in each area of the Key

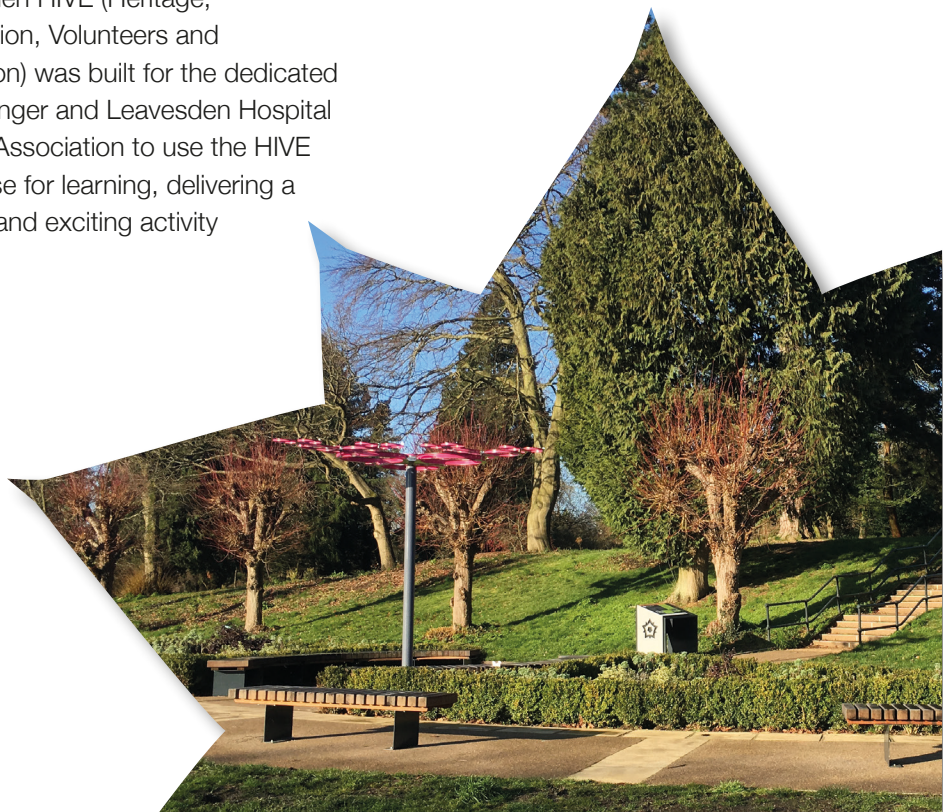
Management Objectives have all been achieved. This includes the planting of two orchards, dealing with deadwood, habitat and wildflower meadow management and halo thinning of native trees.

Habitats for protected species, such as bats, have been taken into consideration, not just with the construction works, but with all the restoration and conservation works throughout the park.

The Horses' Field has developed into a beautiful haven for wildlife of mostly natural habitats, including meadow grassland nesting sites for various species. Of particular note is that the Horses' Field is now home to the Linnet and the ground nesting Skylark, both of which are classified in the UK as 'Red' under the Birds of Conservation Concern 4: the Red List for Birds (2015). They are also protected in the UK under the Wildlife and Countryside Act, 1981 and are a priority Species under the UK Post-2010 Biodiversity Framework. Leavesden HIVE (Heritage, Information, Volunteers and Education) was built for the dedicated Park Ranger and Leavesden Hospital History Association to use the HIVE as a base for learning, delivering a diverse and exciting activity

programme. Opportunities for learning extend into The Garden – an inclusive, year round, eco-friendly space, which was created as a result of our relationship with a local severe learning disability school.

A stunning nine sculpture Heritage Trail was created to pay tribute to the history of Leavesden, reflected in the themes of MINDS, MACHINES and MOVIES, as a result of community workshops to inform the design. Designed for interaction, visitors can spin the zoetrope, nestle in the cockpit to listen to stories of the past and view the subtle movements of the MINDS pieces, whilst reflecting on the artists' concepts. The existing Remembrance Garden has had an extensive makeover and is now a contemplative place of reflection of those who lived and worked at Leavesden Hospitals.



## Achievements over the last five years

From little or no community engagement, the Park Ranger created a flourishing, 80 strong volunteer 'Friends of' group with a core delivery team of 15. Their training included Tree Care and Identification, Visitor Observation Surveys and Orchard Maintenance. The "Friends of" group have delivered significant bulb planting, pruning of the orchard and contributed to the Great British Spring Clean.

Users fed back that access was difficult at the entrance from Langley Lane and through the woodlands. Following advice from Boxmoor Trust, both areas are now improved and accessible at all times of the year for disabled users, cyclists and buggies. Volunteering has significantly increased across the park, ranging from 1,000 plus volunteering opportunities at Junior parkrun to 427 hours delivery by the newly established Friends of group (since October 2018). They have increased their skills and knowledge by assisting the Park Ranger on a range of activities across the park. Volunteers from the Leavesden Hospital History

Association have been instrumental in unearthing and recording over 500 grave markers at East Lane Cemetery. Both of these groups have been supported with training, including orchard management, tree pruning and archaeological surveying.

The extensive Heritage and Wildlife education programme has resulted in over 3,900 attendances in 2019 to various workshops. Not only have we seen a 50% increase in knowledge and understanding of heritage and wildlife in and around the park from evaluation feedback, but we are most proud of being able to engage traditionally hard to reach target groups, such as the Home Schooled, Young Carers and those with a significant disability.

*The park has also been awarded:*

- *the prestigious Green Flag Award as 'A park for everyone' by the International Green Flag Award judges*
- *Achieved 'Much Loved Park' status from the Fields in Trust in 2019, which is voted for by the community*
- *Won the Hertfordshire Sport Partnership's Professional Community Project of the year in 2019, as voted for by stakeholders*
- *Won the Small Visitor Attraction of the Year 2019 by Visit Herts.*

There are a number of positive reviews on local and national social media sites about the quality of this space and community pride in Leavesden Country Park and its facilities.



## What can be found in the park

- A Recreational and Public Facilities**
- B Heritage and Restoration**
- C Conservation, Habitats and Wildlife**
- D The Park Community**
- E Education and Activities**
- F Marketing and Communication**

Whether it is heritage, wildlife, play, sport and physical activity, walking, cycling or visiting the café, Leavesden Country Park has something for everyone.

### How to find the park:

Leavesden Country Park, College Road, WD5 0NX (this postcode is the nearest postcode for the main car park entrance).

There are a several entrances if you are arriving on foot and the park has a number of cycle paths.

The park is located 4.8km north of Watford, on College Road, in Abbots Langley and is part of the grounds which was originally the site of the Leavesden Asylum and Hospitals.

By car: from the M25 exit at junction 19. Take the first exit (A41) signposted Hemel Hempstead. At the traffic lights turn right on to Bridge Road and continue on until it becomes Hunton Bridge Road and eventually Southway. At the roundabout take

the first exit on to Langley Lane. At the next roundabout take the second exit on to College Road and the park entrance is on your left. Car parking is available next to Woodlands YMCA. The nearest postcode to the car park is WD5 0NX.

**By bus:** The 320 bus goes from Maple Cross through Mill End, Rickmansworth, Croxley green, Watford, Garston and Woodside to Abbots Langley. Ask the driver to get off at College Road, just after Tesco Metro.

**By bike:** Contact Leavesden Cycle Hub or SPOKES the South West Herts Cycling Group, for maps, directions and organised cycling trips to Leavesden Country Park.





## Recreation and public facilities

Leavesden Country Park is proud to celebrate and share its rich heritage, social history and natural environment with the community and visitors to the area. It brings together the wishes of the local residents in protecting the legacy of the park and enhancing it for future generations.



### Heritage Trail

- 1 Leavesden Spirit
- 2 A Trick of the Light
- 3 Ghosts in the Machine
- 4 The Boundary
- 5 The Community
- 6 Every Moment Shines
- 7 The Evolution
- 8 The Wooden Wonder
- 9 Kiss of the Screen Gods

### Heritage, Restoration and Conservation

- 10 East Lane Cemetery
- 11 Heritage Orchard
- 12 Leavesden HIVE
- 13 The Font
- 14 Restored Orphanage Railings
- 15 Little Blossom Orchard
- 16 Remembrance Garden
- 17 Edwardian Garden

### Public Facilities

- 18 TRDC Sports Pavilion for hire
- 19 YMCA Community Spaces for hire
- 20 YMCA Charters Day Nursery
- 21 Woodlands Café
- 22 Public Toilet
- 23 Main Car Park
- 24 Overflow Car Park
- 25 College Road Pedestrian Crossing
- 26 Langley Lane Pedestrian Crossing
- ☀ Picnic Area
- 🚶🚲 Shared Footpaths
- 🚪 Entrance/Exit

### Recreation

- 27 TRDC Football Pitch for hire
- 28 Tee Pee Play Space
- 29 3G Football Pitch
- 30 Multi-Use Games Area
- 31 Outdoor Gym
- 32 Mini Sports Court
- 33 Play Area
- 34 Leavesden Cycle Hub
- 35 Langley Lane Play Area
- 36 Parkour Zone
- 37 The Horses' Field

## Recreation and public facilities

### Public Facilities

<b>Main Car Park</b>	Car park accessible from College Road entrance with disabled parking.	Map location 23
<b>Overflow Car Park</b>	Car park accessible from College Road entrance to cater for overflow.	Map location 24
<b>Woodside Car Park</b>	Car park accessible from Woodside Road. Only for access to the outdoor football pitches and changing rooms.	Map location 17
<b>Woodside Sports Pavilion</b>	Sports changing room pavilion for hire.	Map location 18
<b>Community Toilet</b> (YMCA managed)	Community Toilet with disabled access.	Map location 22
<b>Picnic Area</b>	Picnic benches with disabled access on hardstanding.	Site wide
<b>Shared Footpaths</b>	Pathways across the site for both pedestrians and bikes.	Site wide

### Structures

<b>Heritage Sculpture Trail</b>	A stunning trail of nine iconic pieces that you can enjoy from wherever you join it. Set against the backdrop of the park, with each art installation leading you to the next. The sculptures and their themes carry a significance to the community and local history.	Map location 1-9
<b>YMCA Charters Day Nursery</b>	Ofsted Rated Outstanding Nursery offers affordable full day care to children aged 3 months to 5 years. Open 7.30am to 6.30pm, Monday - Friday, 51 weeks a year, closing during Christmas week and on bank holidays.	Map Location 20
<b>YMCA Community Spaces for Hire</b>	2 spaces for local community hire.	Map location 19
<b>Woodlands Café</b> (YMCA Hub)	Open all year round and are pleased to also accept private bookings and charity events. Accessible toilets available.	Map location 21
<b>Leavesden Cycle Hub</b> (YMCA Hub)	Provides coordinated social rides, bike maintenance, bike hire, bike sales and training.	Map location 34
<b>Leavesden HIVE</b>	A wildlife, classroom style training hub for the Park Ranger and a Heritage Hub for the Leavesden Hospital History Association along with a space of learning to hire for educational and heritage purposes only. The Garden, adjoining the facility is fenced and open for everyone to enjoy at all times.	Map location 12

## Recreation and public facilities

Here are the details of the facilities and details of their location on the park map:

### Structures

<b>East Lane Cemetery Lychgate</b>	The lychgate forms the entrance to East Lane Cemetery which was in use 1905-1996, dated 1886 it is believed to have been moved from the old cemetery to the south across East Lane.	Map location 10
<b>Orphanage Railings</b>	Restored railings which have been built along the same line as and in the style of, the Orphanage which was on this site.	Map location 14
<b>Font</b>	Restored Hospital Font which was consecrated and used for the duration of the Hospitals on this site.	Map location 13

### Play Areas

<b>Main Play Area</b>	Contains a range of unique Minds, Machines and Movies themed play equipment for children aged 5–14years.	Map location 33
<b>Tee Pee Play Space</b>	Outdoor tree house type equipment with a hand carved Totem Pole, nestled in a small open area beside the woodland with a fire pit used by the outdoor Play Ranger project.	Map Location 28
<b>Langley Lane Play Area</b>	A NEAP play area with a wide range of equipment to cater for ages 5-14 years, incorporates a sand pit, many pathways and large open free space.	Map location 35
<b>Langley Lane Parkour Zone</b>	Styled on free-running, this equipment provides alternative physical activity.	Map location 36

### Planted Garden Areas

<b>Remembrance Garden</b>	Refurbished garden that now includes sensory, drought resistant planted garden areas, with seating for personal contemplation and is home to one of the Minds sculptures as part of the Heritage Trail.	Map Location 16
<b>The Garden</b>	An all-weather, year round sensory garden with a bug hotel, bee totem pole, grasses, planted archway entrance, edible plants, pergola area with multi-colour roof, picnic seating area and mud kitchen station. Surrounded by Hazel fencing, it has accessible/ raised beds on one side along with a tiered herb planting area and water butt collection point.	Map Location 12 Next to Leavesden HIVE

## Recreation and public facilities

### Planted Garden Areas

<b>Edwardian Garden</b>	This garden boasts a fine collection of trees thought to have been planted in the early 20th century. Included in the garden is a line of Lime trees, large Pines, a Magnolia, Copper Beech and a fine Indian Bean Tree. Both the Silver Queen & Golden King Holly varieties can be seen alongside magnificent Cherry trees, the Hungarian Oak and a Western Red Cedar together with two younger trees the Ginkgo and Dawn Redwood which were planted in 2018. The c1924 OS map indicates a line of trees along the southern boundary, which are probably the same pollarded lime trees that exist today.	Map location 17
<b>East Lane Cemetery</b>	Cemetery that is no longer an active burial site, but is a carefully managed blend of wildlife and an area for people to remember those who were buried there.	Map location 10

### Biodiversity

<b>Heritage Orchard</b>	Orchard planted in December 2016 with a mix of heritage fruit varieties.	Map location 31
<b>Little Blossom Orchard</b>	Apple Orchard planted in December 2019 with a mix of Brownlees Russet, Monarch, Queen's, Lanes Prince Albert and Warner's King varieties.	Map Location 15
<b>Woodlands</b>	This area was planted up after the Hospitals on the site stopped managing this area as farmland. The woodland consists mainly of Sycamore. Where possible a variety of native species have been planted and Sycamore are coppiced to favour existing native and parkland trees.	North Side
<b>Wildflower Meadows</b>	Areas of grassland on the South Side of the park were recognised as being more naturally rich in wildflower species, including Bee and Common Spotted Orchids and are now managed under a cut and lift regime. Additional harrow and seeding has taken place on some of the areas and species such as Yellow Rattle have been added to aid improvement for wildflowers.	South Side
<b>The Horses' Field</b>	<p>The grassland within the Horses' Field has been worked on in thirds to bring it into a manageable condition. This has involved the clearance of rubble, cut and lift, Harrow, seeding and rolling. Bramble patches have been retained for nesting Linnets. The future plan is to manage this field under conservation grazing, which is the most environmental and ecologically sensitive method of management.</p> <p>Native mixed species hedges and gorse have been planted to increase wildlife benefits, especially for birds and invertebrates.</p>	

## Recreation and public facilities

### Biodiversity

<b>East Lane Cemetery</b>	Native woodland bulb planting has taken place in various locations within the cemetery. These include bluebells and snowdrops. The perimeter of the cemetery has been left for native wildflowers, grasses and hedgerows.	
<b>Rank Grassland</b>	Areas of rank grassland are to be cut on a two year rotation to prevent the domination of scrub. These are mainly found in the margins of the site and amongst more recent tree planting such as the Heritage Orchard. These areas are important areas for wildlife including invertebrates, small mammals, birds, Hedgehogs, Common Frogs and Grass Snakes.	North Side
<b>Habitat Improvements</b>	<p>Several hibernacula have been created in the north of the site for overwintering reptiles and amphibians, as Common Frogs and Grass Snakes have been confirmed on site, and these also benefit many other species.</p> <p>Bat, Kestrel and Owl boxes have been put up and we have had confirmed successful breeding of Kestrels and Tawny Owls on site.</p> <p>There are many other 'man-made' habitats to encourage diversity of wildlife, such as the bug hotel in The Garden with a variety of materials to encourage a wide range of invertebrates along with many bug hotels made out of felled trees with drilled holes to encourage insects such as Solitary Bees, which are dotted over the park.</p> <p>To preserve habitats, grassland and woodlands areas are managed to ensure that areas are left for nature to thrive.</p>	Site Wide
<b>Trees</b>	All felled trees will remain on site to create new habitats and improve biodiversity	Site Wide

### Sports Facilities

<b>3G pitch</b> (YMCA Managed)	YMCA bookable pitch with a surface that supports play of Football, Rugby Union, Rugby League, Lacrosse and American Football.	Map Location 29
<b>Multi Use Games Area (MUGA)</b> (YMCA Managed)	Fenced court marked out for playing a variety of ball games and sports, such as Netball, Basketball etc.	Map Location 30
<b>Outdoor Gym</b>	Outdoor gym equipment comprising of leg press, chest press, cross trainer and cycle.	Map Location 31
<b>Mini Sports Court</b>	Goalmouth, Basketball Post and Shelter Equipment to provide either single play or small group play for football, basketball or netball, with a shelter.	Map Location 32
<b>Woodside Football pitch and Pavilion</b>	Outside football pitch and changing room facilities on the site known as Woodside Pavilion. Used primarily for 'Sunday League' style of football groups.	Map Location 27



*Kiss of the Screen Gods*

## Heritage and Restoration

### Site Heritage

The park shares its rich heritage, social history and natural environment with the community. Original features of the park have been restored and conserved for future generations to enjoy.

*Restoration work includes:*

- *Work to the 1866 Lychgate and East Lane Cemetery including uncovering and recording 510 grave markers, to mark the significance and pay homage to those who lived, worked and died there until as late as 1995*
- *The St Pancras Workhouse/ Orphanage railings have been beautifully restored along College Road*
- *The Hospital Font has been restored, situated near the car park and first shown on an OS map in 1897*
- *The original vistas of the Edwardian Garden have been carefully restored to their former glory and includes important specimen trees, such as the Western Red Cedar and Chilean Pine*
- *The Victorian steps have been re-laid to lead to the newly designed Remembrance Garden*
- *A Remembrance Garden, has a special place in the park to pay respect to those who lived, worked and volunteered in the many hospitals of Leavesden*
- *Nestled in the quieter south side is the new Little Blossom Orchard, a small fruit orchard for the community to enjoy*
- *Tree planting and the establishment of wildflower meadows is across the site*

### Designations:

The park does not have any heritage designations; however, the area includes three Tree Preservation Orders - TPO 284, 285 and 286.



## Heritage and Restoration

### Heritage work:

The history of the Leavesden Asylum/Hospitals, Leavesden Aerodrome and Rolls-Royce factory and the Leavesden Film Studios have been recognised and respected within the park by:

- *A Heritage Trail of nine statement sculptures sits within the park. These pay tribute to the site's history and the trail is known as: Minds, Machines & Movies*
- *Interpretation boards stand alongside much of the restoration and heritage work, explaining the context of the work*
- *The heritage of the wildlife and nature are celebrated throughout the site with additional interpretation boards. This include: Grasslands habitat, Woodland habitat, Edwardian Garden and Little Blossom Orchard*
- *The Covid-19 Snake, an art installation of painted stones created by the community of Leavesden and set in cement along the path adjacent to the car parks*

Work continues throughout the park to build and enhance on these features. The management plan details the inclusion of the Horses' field. This area is reached at the end of the south side of the park and boasts a diverse and unique wildlife haven. Rich in biodiversity the grassland habitats include tussocky grass, wildflowers such as yellow rattle and areas of bramble, supporting Red Listed birds including linnets and skylark.

In addition, the Langley Lane play area and the Parkour Zone is located on the corner of Langley Lane and South Way within the Horses' Field.

### Landscape:

The area sits within the 'Bedmond Plateau' Landscape Character Area, a gently undulating plateau area of small to medium sized fields, consisting predominantly of pasture with discrete woodlands.

The underlying geology is a combination of plateau gravel and river terrace drift. The soils are characterised by well drained flinty, coarse, loamy and gravelly soils with slowly permeable sub soils.

### Archaeological Interest:

Much of the parish lies on high ground which slopes down westwards into the Gade valley. The village of Abbots Langley occupies one of these hilltops and now also the adjacent slope. The river valley, like many in the county, has yielded evidence in the form of flint tools from the upper Palaeolithic period (10,000BC) onwards. Tools of Mesolithic (8000-4000 BC) and Neolithic (4500-2500 BC) date have been recorded in the area.

Investigation at the old Leavesden Studios recorded a long sequence on the lower ground east of the river: an early Bronze Age (2500-1200 BC) ditch, later Bronze Age (1200-800 BC) pits and post holes, and an Iron Age and Roman farmstead (400 BC to AD 400).

No post-Roman or Anglo-Saxon remains have yet been recorded here. Historic Landscape Characterisation shows that the fields south of the village are 'ancient irregular fields' with boundaries which have apparently remained unaltered since the medieval period. The area includes post-medieval chalk pits and a chalk mine in the grounds of Hunton Park. Hunters Lane, which ran through the ancient fields, was removed with the establishment in 1940 of Leavesden aerodrome and aircraft factory.

Several Second World War buildings survived when the aerodrome became Leavesden Studios in 1994, and were recorded before redevelopment in 2010-11.

The remnant of an ancient hedgerow or woodland runs along the north-western boundary of Horses' Field, including a wood or hedge bank and old coppice stools.





## Conservation and Wildlife

Leavesden Country Park and the Horses' Field offers a range of habitats, including parkland, grassland, woodland, wildflower meadows, scattered trees and scrub. Descriptions of the habitat types present along with dominant species compositions are provided below.

### Parkland

The south side of the country park formally made up the grounds of the asylum. The area is largely open grassland with ornamental standards, most of which are specimen conifers alongside some native broadleaves. Whilst there is no obvious theme or link between the various plantings there is clearly diversity of form, size and colour of tree. New specimen trees have been planted in the parkland to replace older trees as they die off or to increase the number of trees within the park.

East Lane Cemetery is laid out with two paths in the shape of the cross with a small circular area in the centre and the lychgate forming the entrance from East Lane. The paths are lined with avenue trees with alternate plantings of horse chestnut, lime and London plane. A cedar tree was planted in each of the four corners and beech and lime trees along the frontage with East Lane.

In the north side of the park, a large Heritage orchard was planted by volunteers in autumn 2016 to the north of the playing field. This contains Heritage Hertfordshire species of 24 apples, seven cherries, six plums, ten pears and one mulberry.

Also in the north side of the park, an avenue of horse chestnut tree lines the edge of the playing field and an area of mature parkland trees are

located in the area between the two car parks. Several of these show previous management work such as crown reductions.

In the south side of the park the small Little Blossom Orchard was planted in November 2019 with 15 apple trees of five varieties. The grassland within the area of the orchard will be planted with wildflower plugs or seeds, and seasonal bulbs, and managed under a cut and lift regime.

### Scattered Trees (broadleaved and coniferous)

Both mature and immature scattered trees are present across the park, with a large variety of species. A mix of native and non-native species are present, as well as a mix of broadleaved and coniferous species. Commonly occurring species include Oak *Quercus* species, Ash *Fraxinus excelsior* and Lime *Tilia* species, whilst mature exotic species include Cedar *Cedrus* species, Monkey Puzzle trees *Araucaria araucana* and Magnolia *Magnolia* species.

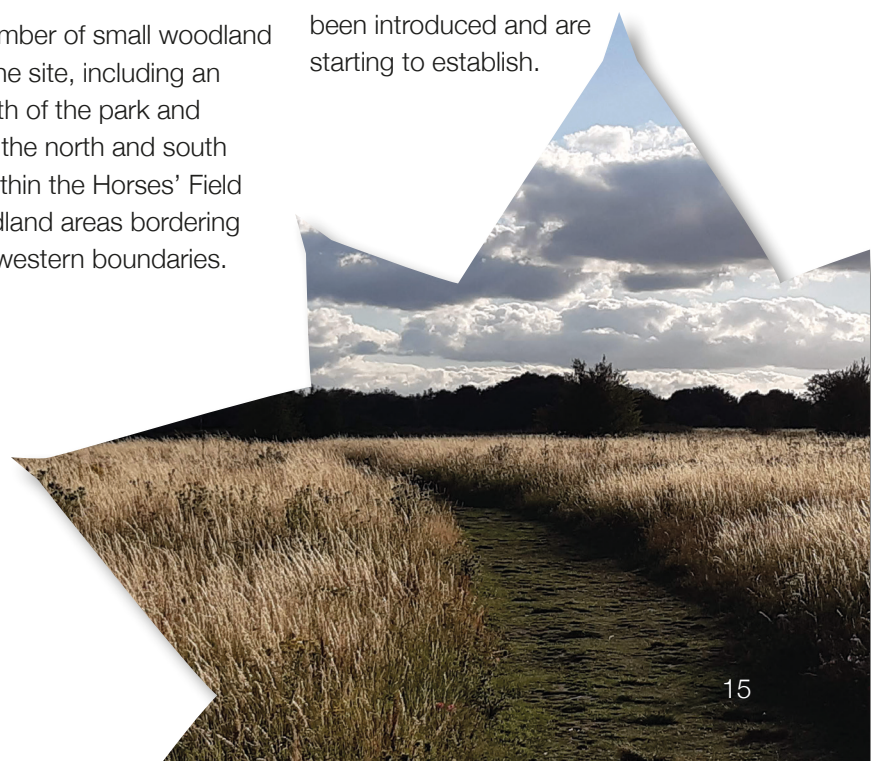
### Woodland

There are a number of small woodland areas across the site, including an area in the north of the park and borders within the north and south of the park. Within the Horses' Field there are woodland areas bordering the north and western boundaries.

The woodland structure is dominated by sycamore with occasional oak, cherry and silver birch. Thinning and coppicing has been undertaken in places, with cut material used to create brush piles, hibernacula and hurdle fencing. Halo clearance of Sycamore Trees occurs around native and parkland trees. To ensure the protection of breeding birds, felling operations will be completed outside of the recognised bird breeding season (end of February to the end of August).

The plantations are generally dark and as a result there is very little understorey. Where light conditions allow, there is some understorey developing in places, comprising mainly of hawthorn and elder. Recent natural regeneration mainly consists of sycamore, ash and holly, with occasional oak and yew.

The ground flora is dominated by bramble and nettle. Some interest does exist along the woodland edge where red campion and male fern persist. Wild garlic, snowdrop, bluebell and wood anemone have been introduced and are starting to establish.



## Conservation and Wildlife

There are a number of small woodland areas across the site, including an area in the north of the park and borders within the north and south of the park. Within the Horses' Field there are woodland areas bordering the north and western boundaries.

The woodland structure is dominated by sycamore with occasional oak, cherry and silver birch. Thinning and coppicing has been undertaken in places, with cut material used to create brush piles, hibernacula and hurdle fencing. Halo clearance of Sycamore Trees occurs around native and parkland trees. To ensure the protection of breeding birds, felling operations will be completed outside of the recognised bird breeding season (end of February to the end of August).

The plantations are generally dark and as a result there is very little understorey. Where light conditions allow, there is some understorey developing in places, comprising mainly of hawthorn and elder. Recent natural regeneration mainly consists of sycamore, ash and holly, with occasional oak and yew.

The ground flora is dominated by bramble and nettle. Some interest does exist along the woodland edge where red campion and male fern persist. Wild garlic, snowdrop, bluebell and wood anemone have been introduced and are starting to establish.

Competitive species such as Bracken and Bramble are managed by regular cutting. Small patchy areas are left due to the benefits for associated species as well as providing cover for small mammals and a nectar source for a range of invertebrates. This

technique also ensures that areas of sensitive ground flora and even individual plants such as ferns will be retained. Care will be taken to ensure any clearance takes place outside of the bird nesting period.

### **Broadleaved woodland** (plantation)

Stands of young Broadleaved woodland are present in discrete areas throughout the Park, with the largest found to the north. These areas contain Silver Birch *Betula pendula* and Sycamore *Acer pseudoplatanus*, with occasional Oak *Quercus* species. The understorey is sparse, containing occasional Hawthorn *Crataegus monogyna*.

The ground flora is dominated by Bramble *Rubus fruticosus* agg. The other areas of woodland are found along the borders of the southern part of the Park. These contain Hazel *Corylus avellana*, Pedunculate Oak *Quercus robur* and Field Maple *Acer campestre*, with occasional Silver Birch, Blackthorn *Prunus spinosa* and Bramble. Several Scots Pine *Pinus sylvestris* trees are also found on the south-eastern border. These areas of woodland were all quite young at a height of 6-7 metres with thin boles and as such are presently almost scrub like in structure but will mature to this habitat.

### **The Horses' Field** (Woodland)

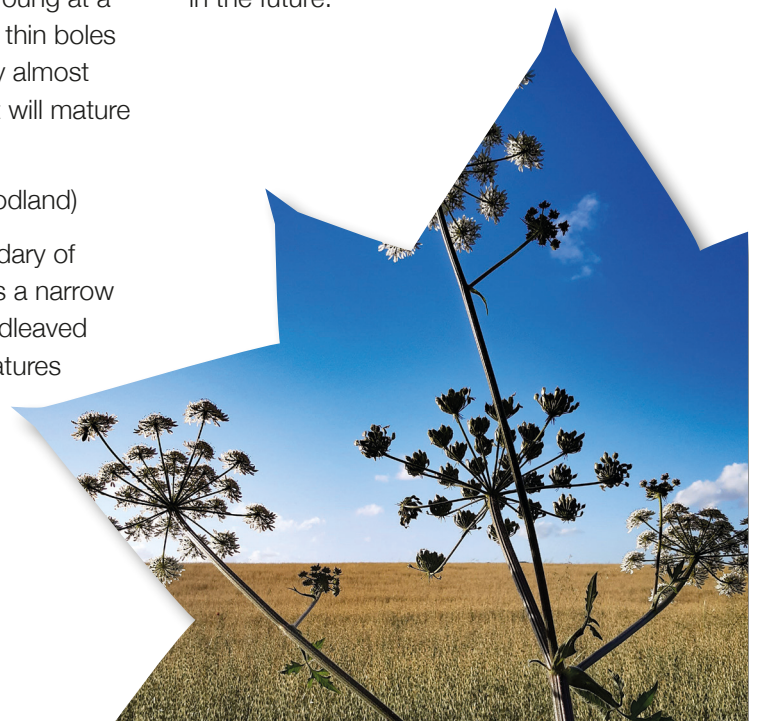
Part of the western boundary of the Horses' Field includes a narrow strip of semi-natural broadleaved woodland, supporting features

comparable with a remnant of old or ancient semi-natural woodland.

The woodland has been subject to disturbance with very uneven ground in places. Internally, there is a remnant boundary hedge and bank feature running the length of the wood that supports old coppice. A ditch along the eastern edge approximates the boundary between the wood and the adjacent scrub.

Hornbeam is a major component of the canopy along with ash, field maple, oak, willow and planted lime and sweet chestnut. The shrub layer is mostly hawthorn and elder, along with less frequent hazel, holly, ivy and blackthorn. Shade-tolerant vegetation, mainly common nettle and ivy are present on the ground. The ancient woodland indicator bluebell is locally frequent in the less disturbed part of the wood, with other species recorded including cow parsley, garlic mustard, nipplewort and wood avens.

Within the Horses' Field there are a large number of young trees growing, with the potential for some of these to be retained as feature parkland trees in the future.



## Conservation and Wildlife

### Grassland

The majority of the grassland habitats on the north side of the Country Park are managed as amenity grass and are therefore of low ecological significance but important for recreation.

### Amenity Grassland

This habitat comprised a large portion of the site. It was dominated by Perennial Ryegrass *Lolium perenne*, with frequent White Clover *Trifolium repens*, Daisy *Bellis perennis* and Dove's-foot Crane's-bill *Geranium molle*. This habitat appears to be managed regularly, and as such is a short sward.

The grass paths running through the woodland plantation in the North side of the park, act as small rides, and some botanical interest does exist along the ride edges where the vegetation is not regularly mown. Red campion and rose bay willow herb are abundant with grass species including cock's foot, false oat grass and Yorkshire fog present within the sward. Previous collection and dispersal of seeds, in particular red campion, has enabled some sward diversity to develop.

### Poor Semi-Improved Grassland

There are several areas of this habitat located across the Park, which are dominated by Cock's-foot grass *Dactylis glomerata*. Other frequently and occasionally occurring forb species can also be found. This habitat is subject to less rigorous management than the amenity grassland, with the grass and occasional wildflowers allowed to grow longer.

There are also small areas of unmanaged rank grassland along the edges of the site, a valuable resource given how intensively the Country Park is managed.

### Ruderal (Rank Grassland)

An area of ruderal grassland is present in the northern part of the Park, this area is dominated by Nettle *Urtica dioica*.

### Wildflower Areas

A large percentage of the south side is managed as a parkland landscape, however there has been a concerted effort to create wildflower meadow areas towards the Langley Lane boundary. These areas were sown with yellow rattle and are managed through a cut and lift regime. These areas have established well and now present the opportunity to add further diversity to the sward. These meadows will be enhanced and expanded by scarifying both within the meadows and in adjacent areas and seeding with a diverse species mix to include:

**Yarrow** - *Common Knapweed*

**Field Scabious** - *Oxeye Daisy*

**Birdsfoot Trefoil** - *Selfheal*

**Meadow Buttercup** - *Cowslip*

Areas of existing botanical interest such as populations of Common Spotted and Bee Orchid will be avoided and protected.

Bulbs including Snowdrop and Bluebell have also been introduced in several locations. Further bulb planting will be initiated as part of this

plan and will be completed in conjunction with the wildflower seeding. Bulbs will be planted in drifts along the edge of the new wildflower areas. This will provide colour and interest early in the season but will also mark the edge of the wildflower areas providing a natural barrier, preventing the Environmental Protection team unintentionally mowing the meadows early in the season.

### Horses' Field (Grassland)

Horses' Field historically supported a mosaic of species poor neutral grass and tall herbs which had developed from neglected improved grassland. A programme of grassland enhancement was completed in 2019 with wildflower seeds sown across much of the grassland area. Species diversity within the sward has been greatly increased, and future management aims to maintain species-rich tussocky grassland. From 2021, The Horses' Field will be managed through seasonal cattle grazing in order to improve the management of the wildflower meadow. This will create an enhanced habitat for wildlife and feature of interest for visitors, using a sustainable form of management.



## Conservation and Wildlife

Conservation grazing enhances overall biodiversity, supports wildflowers and creates a mosaic of habitats ideal for our native wildlife, with different structures of grasses and flowering plants that can develop with an annual cut and lift. The cow pats left behind from cattle are also important to meadow ecology, as a number of invertebrates and fungi (many of which are now very rare) need dung as part of their specialist lifestyles. Cattle grazing on The Horses' Field will manage the meadow in a gradual, low intensity way, causing much less damage to wildlife and making it a more favourable option than cutting.

### Scrub and Hedgerows

Within the country park, scrub is largely confined to boundaries and field edges, with a good diversity of ages present. The perimeter of the country park is formed by mixed plantations containing a variety of hedgerow species including field maple, guelder rose, hawthorn and hazel, with bramble and nettle beneath.

The western, northern and part of the eastern boundary of Horses' Field is bordered by wide bands of scrub dominated by bramble with scattered shrubs, consisting mainly of blackthorn with elder and hawthorn. To the west, in particular, cherry plum is common, and an area covered with aspen is present mid-way along the western strip of scrub. Other species present in the community include ash, sycamore, pedunculate oak, buddleia and honeysuckle. Along the northern boundary there are frequent trees and shrubs, including field maple, ash and pedunculate oak. Two large patches of bramble occur within the grassland. Around 525m of hedgerow was planted in 2017 along sections of the

perimeter around Horses' Field, which is establishing well. The hedgerow is made up of species including hawthorn, field maple, hornbeam, guilder rose and hazel, interspersed with oak standards.

In a number of areas, there is a good transition from scrub to rough grassland, before meeting amenity grassland. In places bramble and blackthorn are starting to encroach in to this rough grassland habitat. Rank Grassland is managed on a two year rotational annual cut, to prevent encroachment of scrub and minimise disturbance to wildlife.

Scrub and bramble patches are retained in some places and managed at the appropriate time of year to prevent disturbance of nesting birds.

### Invasive Species, Pests and Diseases

Non Native Invasive Species (NNIS) are defined as:

*'Species which have been brought into the UK that have the ability to spread, causing damage to the environment, the economy, our health and the way we live'.*

Three Rivers District Council (TRDC) will comply with all legal responsibilities relating to NNIS. There are several NNIS either already identified on the site, or within the local area, these are outlined below.

#### Invasive species

##### *Japanese Knotweed*

TRDC are taking a proactive approach to controlling this species. Japanese Knotweed has previously been found on site and is being monitored and treated twice a year under the instruction of Three Rivers District Council.

##### *Cherry Laurel*

Laurel is present in some established scrub and woodland areas.

### Pests and Diseases

#### *Ash dieback*

The presence of ash dieback is monitored as part of tree health and safety surveys. There is relatively little ash within Leavesden Country Park.

#### *Oak Processionary Moth (OPM)*

OPM is an invasive species introduced into England in 2005. It has since become established in London and is now spreading into surrounding counties, with several cases found within Three Rivers District in 2019. While the moth is harmless, caterpillars pose a risk to public health through microscopic hairs which cover its body. Contact with hairs typically causes skin rashes, although symptoms can include eye irritation, sore throats and in extreme cases breathing difficulties and allergic reactions. If OPM is discovered in Leavesden Country Park, TRDC will work in partnership with the Forestry Commission and the correct procedure for removal will be followed.





*Linnet*

## Conservation and Wildlife

The vision for the whole park is to create a biodiverse wildlife haven and beautiful landscapes.

### Wildlife

*Protected Species and UK Biodiversity Action Plan (BAP) Habitats and Species*

There are a number of priority habitats and species as listed under the UK BAP and within the Hertfordshire BAP, 'A 50 Year Vision for the Wildlife and Natural Habitats of Hertfordshire' found within Leavesden Country Park. These can be summarised as follows:

#### Herts BAP

Song Thrush

Woodland

Urban Habitats

#### UK BAP

Hedgerows

Grass Snake

Hedge Accentor (Dunnock)

Common Starling

Noctule Bat

Hedgehog

Bullfinch

Song Thrush

There are six Red Data List Bird Species (Highest Level of Conservation Concern) recorded as using and breeding on site (Starling, Song Thrush, Mistle Thrush, House Sparrow, Skylark and Linnet).

#### Bats

Pipistrelle and Noctule Bat have been recorded from the site. The network of habitats including mature trees, hedgerows and a variety of grasslands types offer important feeding opportunities for Bats. Bats will be considered when implementing all aspects of this management plan especially when considering the management of large trees and will include:

- A licensed bat ecologist will inspect trees that need managing that contain potential bat roosts.
- Trees containing bat roosts will be left intact where possible. Full licensing procedures will be followed if this is not feasible.
- The document 'Bats and Lighting in the UK' produced by the Bat Conservation Trust will be followed in respect of any new lighting proposals.



## The Park Community

Three Rivers District Council's vision is that the district should be a better place for everyone, their neighbourhoods, health, employment and access to services. For Leavesden Country Park, this vision can only be achieved with the support of the public and its volunteers and is also underpinned by the National Lottery Heritage Fund (NLHF) Activity Plan.

The Activity Plan, which is tailored to meet the needs of the demographics in the area, covers both the current and target audiences. These activities within Leavesden Country Park reflect this ethos by promoting a healthier community and an active lifestyle, whilst respecting the environment and its setting. There are many opportunities and projects available through the volunteer programme; from maintaining the orchard to assisting with park events.

The Council aims to offer something for everyone and hope that people and the community will be inspired to be involved.

As part of the HLF funded project, a full-time Park Ranger has been employed until 2021. The objective of the post is to:

- *Increase the number and range of people visiting Leavesden Country Park and work with key partners to deliver a programme of events and activities for local people and visitors to the area.*

- *Create and deliver a comprehensive programme of educational walks, talks and other outreach activities in line with the Activity Plan submitted as part of the Heritage Lottery Fund bid. The emphasis will be on developing relationships with schools, community groups and the public.*
- *Engage partners in developing, implementing and reviewing the site management plans at Leavesden Country Park.*

Leavesden HIVE (Heritage, Information, Volunteers and Education) was built for the dedicated Park Ranger and Leavesden Hospital History Association to use as a base for learning, delivering a diverse and exciting activity programme.

The Leavesden Hospital History Association (LHHA) was started in 2008 for the purpose of preserving the history, heritage, memorabilia and memories of the doctors, nurses, staff, volunteers and residents who

worked and lived at Leavesden Hospital (1870-1994) St. Pancras Orphanage (1870-1932) and the Canadian Hospital (1939-1947). They regularly host open days at the HIVE for the community to drop in, have worked on the East Lane Cemetery restoration, research hospital and family histories, and host guided heritage walks across the site.

Partner organisations across Leavesden Country Park include local police, Woodlands Cafe, Leavesden Cycle Hub, other departments from TRDC and the YMCA. These organisations have a collective responsibility for community activity and engagement within the park.



## The Park Community

Under the management of the Park Ranger, a 'Friends of Leavesden Country Park' group has been established to engage the local community in site management and events. Their volunteer work includes planting spring time bulbs to keep colour throughout the year, recording some of the wildlife living throughout the park, maintaining the orchards, assisting with community events taking place in the park, and caring for the Remembrance Garden.

Their program of works is linked to implementation of the site management plan and community aspirations for the park. Mailing list includes 80 people with a regular

group of 15 attending monthly. This group is the volunteer force leading on the annual visitor observation surveys. Up until 2020, a probation group ran on a weekly basis, which unfortunately ended due to the Pandemic and lack of staff resources during this period. They mainly carried out conservation based tasks, including woodland and grassland management, tree planting, seed collection, bug hotels, reptile and amphibian hibernacula and Hedgehog homes.

The Park is covered by the local byelaws (<https://www.threerivers.gov.uk/egcl-page/byelaws>) and it has regular patrols from the local Police Community Support Officers

(PCSOs), with the YMCA hosting a Hub for PCSO's to meet with the local community. Three Rivers District Council Community Safety Partnership and Grounds team are linked with the PCSO's to review any anti-social behaviour. Each piece of outdoor leisure equipment is inspected by Three Rivers District Council Grounds team weekly, monthly for an operational check and by an external play inspector annually.

A number of these groups improve visibility in the park and offer the community ways to engage.







## Education and Activities

The Country Park has received National Lottery Heritage funding for a three year activity plan running until October 2021. The activity programme is unique - engaging vulnerable groups in various workshops, including Young Carers, school groups, and health and wellbeing activities.

The programme is based from Leavesden HIVE, a centre for learning and is supported by a specialist historical association, dedicated to the site's history. The Leavesden Hospital History Association delivers historical walks and talks throughout the site, open drop in sessions, allowing access to historical artefacts from the Hospitals and facilitates a number of projects, including oral history recordings and archaeological surveying of East Lane Cemetery. Oral history recordings are available to be listened to within the University of Hertfordshire's Heritage Hub.

Opportunities for learning extend into The Garden – an inclusive eco-friendly space, which stimulates the senses, designed to invite the visitor to interact with nature and search for bugs in the bespoke bug hotel.

The Park Ranger uses the HIVE as a base for a diverse and exciting activity programme. Recent groups accessing the facility include the uniformed organisations for bat walks, Young Carers for scavenger hunts, U3A groups and most recently new partnerships with MIND and Herts and Middlesex Wildlife Trust. The programme is extensive and has the ability to grow to further embrace health and wellbeing, environmental issues and wildlife topics. The HIVE provides a safe learning environment

which can be used for a variety of groups so that each visitor leaves the site having explored, discovered and learned.

The HIVE is home to an outdoor education programme, which links in with local schools, Home Schoolers and uniformed organisations such as Scouts. These sessions provide a springboard for outdoor learning and support schools in bringing to life the outdoor world, based around the national curriculum (KS1 and KS2) with enrichment activities. Examples could include: habitats and biodiversity, wildlife identification, lifecycles and twilight wildlife (bat walks).

Examples of events and activities and groups that take place throughout the park:

- *Guided wildlife walks, including Butterfly Walks, Bug Hunts*
- *Health walks, including Nordic walking and Mindfulness walks*
- *Health and wellbeing activities e.g. parkrun, yoga and tai chi*

- *Play Ranger events*
- *History Walks and open event sessions with the Leavesden Hospital History Association*
- *Arts on Prescription (Social Prescribing for adults with mental health issues)*
- *MIND – Healthy Hub base*
- *Herts and Middlesex Wildlife Trust*
- *Ad-hoc seasonal and community events*
- *Photography classes*
- *U3A Historical and Environmental groups*
- *Targeted events e.g. work with Young Carers*
- *Outdoor Education Programme*

Following full evaluation of the activities, the activity programme will continue to be developed to reflect the changing needs of the audiences and required resources.





**ThreeRivers Leisure**  
Visual storyteller • 5 d • 📷

If you go to Leavesden Country Park this weekend you may be in for a surprise. The woods can seem quiet at this time of year but looks can be deceiving. Peek a little closer and you may notice they've become enchanted with stories and magic. There might just be enough magic in the frost-filled air to spot the fairies and elves as they busily put the year to sleep and prepare for another turn of the season.  
#christmas #fairies #fairywoodlandwalk #leavesdencountrypark #woodlandscap #elves



**LEAVESDEN COUNTRY PARK**

**Hello there and welcome to the Snowman's Heritage Trail!**

**M**

**There are 9 of us in total along the Heritage Sculpture Trail, can you spot my other friends too? Make a note of their letter clues to spell out a festive word and you could win the prize!**

Scan the QR code for more information about how to take part in our festive competition.

HERITAGE FUND | THREE RIVERS DISTRICT COUNCIL

**LEAVESDEN COUNTRY PARK**

**Hello there and welcome to the Snowman's Heritage Trail!**

**There are 9 of us in total along the Heritage Sculpture Trail, can you spot my other friends too? Make a note of their letter clues to spell out a festive word and you could win the prize!**

Scan the QR code for more information about how to take part in our festive competition.

HERITAGE FUND | THREE RIVERS DISTRICT COUNCIL

**Leavesden Country Park**

**Wildlife**

We hope you've enjoyed the changes in the park and that the last few years of the National Lottery Heritage Fund project has helped us bring so many great things into the park. While you may have seen the amazing sculptures, the Remembrance Garden, East Gate Carriage and many other sites, did you know that we are now turning friendly habitats as well?

Within the park, several wildlife meadows have been created with flowers such as meadow daisies, lady's bedstraw, meadow thistle and common heath, while wildflowers around the park's tree-rocket arboretum are being nurtured to boost a particular friendly habitat. Close to the meadow of ground hells, called from the park's disbandment and direct opportunity to a range of sites to encourage solitary bees such as leaf-cutter and oil-seed bees.

Children can enjoy the wildlife theme that runs throughout the new play area and can see the garden which has native plants like the soft-leaved aster, lavender and thyme to attract and provide food sources for the bees. Parents can enjoy the huge log table, which creates a home for solitary bees and other pollinators.

Information boards describing the pollution problem and biodiversity of the site will be placed in the Little Blossom Orchard to raise awareness of bees and their habitat, alongside wildlife meadow signs and their role in helping pollinators.

Leavesden Country Park was transformed from a large open area primarily used by the public and is now a thriving centre for nature, fitness and leisure. To do for generally thank the members of the 'Living Friends of groups' for their hard work in making the park so attractive.

The park ranger has encouraged children and volunteers to make their own bee-habitat and bug-habitat and also encouraged local gardeners to garden, which will increase the amount of the critical role that bees play in our ecosystem. The 'Friends of groups' will be asked to plant a further 2,000 bulbs this autumn to add to the 5,000 planted over the last few years. Pollinators benefit from a wide range of plants and flowers, so it's important to have a mix of plants and flowers in your garden.

Fill a small dish or bowl with clean water, and arrange pebbles, marbles, beads or stones inside so that they are spaced out of the water.

Bees will land on the pebbles and pebbles to drink the water as they take a break from foraging and pollinating.

They need very shallow water to drink from. However, shallow water evaporates quickly so it may need to be topped up daily and clearly the dish should be cleaned weekly.

HERITAGE FUND | THREE RIVERS DISTRICT COUNCIL

**How to make a Bee Bath**

**READY FOR THE SPRING**

A bee bath is easy to make and it's a nice touch to help out your pollinating guests. After all, without those busy workers in the garden, we wouldn't have so many flowers or fresh vegetables and fruits to harvest, and collecting pollen is a tricky work. Listed below are some instructions for bee and butterfly water baths that may be possible to make with items around your house and garden.

Watch out for a whole variety of other near-spring. Pollinators benefit from a wide range of plants and flowers, so it's important to have a mix of plants and flowers in your garden.

If you want to help on your own, please contact a friend of Leavesden Country Park. Email our park ranger on [leavesden@leavesden.gov.uk](mailto:leavesden@leavesden.gov.uk)

HERITAGE FUND | THREE RIVERS DISTRICT COUNCIL

**Leavesden Country Park**

**A Wildlife and Heritage Activity Trail through Leavesden Country Park**

HERITAGE FUND | THREE RIVERS DISTRICT COUNCIL

**Fairy Woodland Walk**

HERITAGE FUND | Leavesden Country Park | THREE RIVERS DISTRICT COUNCIL

**Welcome to Leavesden Country Park**

As you stand at 'The Leavesden Spirit' sculpture, number 1 on the Heritage Trail map, we invite you to enjoy a journey through the park. Investigate the heritage and wildlife of our exciting site, using the interpretation boards to find out answers and guide you on your adventure!

- When did the Rolls Royce factory close in Leavesden and where was the poem left?
- Take a walk now by the 'A Trick of the Light' sculpture - give it a spin - and cross College Road and enter the other side of the park.
- Along the railings you should see spring bulbs flowering, hopefully you'll see Crocus and Snowdrops, and they look like this. They begin to flower from January and provide an early food source for lots of insects. Perhaps take a closer look or a photograph, so you can draw these at home.
- Once you see the 'Ghosts in the Machine' sculpture, head over to your right. There is a triangle of newly planted trees. How many apple tree varieties are there in the Little Blossom Orchard?
- Take a look at the big park map - how many minutes' walk is it to the Langley Lane Play Area from this point?
- Standing at the Grasslands interpretation board, do you know the tree on your left?

(HINT - it is number 1 on the interpretation board and squirrels love the acorns on this tree.)

Stand really still and listen quietly, what can you hear? Can you see any birds or butterflies?

HERITAGE FUND | THREE RIVERS DISTRICT COUNCIL

## Marketing and Communication

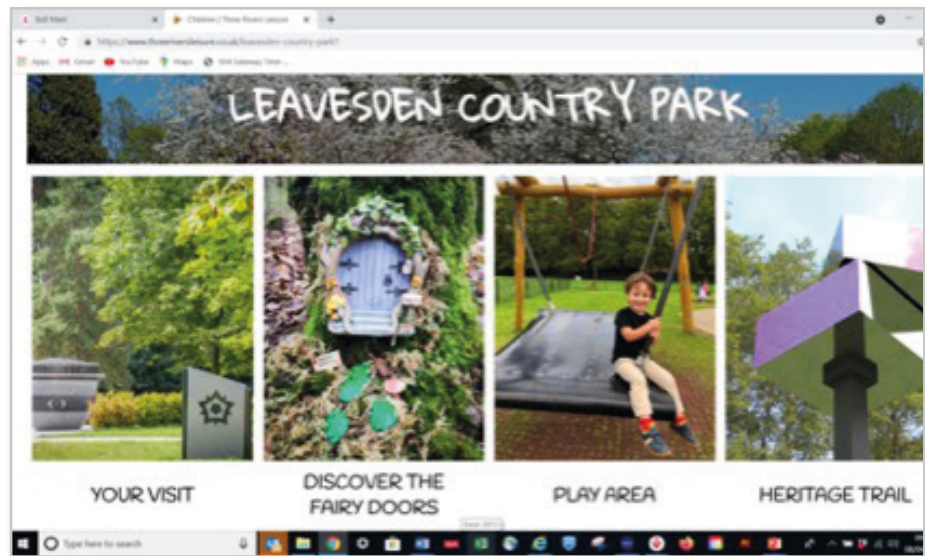
A strong marketing and communications programme has been in place since the National Lottery Heritage Funded project was launched in 2018. Its main focus is to increase the footfall into the park and raise the awareness of the visitor to the impressive historical, social and wildlife heritage of the site.

All marketing and communications carries the newly developed branding of the site which includes a colour palette, font and logo. The Country Park's logo has been inspired from the monkey puzzle tree, of which three stand in the Edwardian Garden in the south of the park. The branding has given the country park a sense of arrival and place. Site wide maps, site signage and information boards are all part of the new marketing and help to move the customer through the park seamlessly.

Of significance in the park are the partner organisations namely the Woodlands Cafe, Leavesden Cycle Hub and the YMCA, who have all adopted the guidelines and work within them to enhance the visitors' experience.

The park won the "Small Visitor Attraction" category as part of the Hertfordshire 2019 Tourism Awards (alongside Warner Bros. Studio Tours as Large Attraction). In addition the project also won the Hertfordshire Service to Sport Awards for 'Community Project of the Year (professional)'

Of significance, the recent work in the park has led to it being shortlisted under 'Community Involvement' as part of the Local Government Chronicle Awards.' This selection was from 700 applications.



The project continues to receive positive feedback and reviews on social media about the rejuvenated park.

There are several different marketing strands to reach targeted and general audiences. These include:

- *Council website with bespoke Leavesden Country Park page [threeriversleisure.co.uk](http://threeriversleisure.co.uk)*
- *Social media reach including local Facebook sites and twitter*
- *Monthly MyAbbots article featuring the park*
- *Regular press releases*
- *Regular updates to Councillors and Stakeholders*
- *Activities noticeboard in the Cafe*
- *General noticeboard on the HIVE wall*
- *Banners announcing the two award wins are on display in the park*

Demonstrating the project's reach are the two specialist volunteer groups in the park: The Friends of Leavesden Country Park and the Leavesden Hospital History Association. These groups activity recruit and meet throughout the year and are focused on enhancing the park. The Friends of group take responsibility for the garden areas, whilst the historical association are focused on East Lane cemetery and carrying out historical research work.

The parks activities and high profile is an essential part of the growth in footfall and is essential for the ongoing success of the park.

As part of the National Lottery Heritage Fund requirement, the park has undergone annual Visitor Satisfaction Surveys and Visitor Observations. These findings have proved important in monitoring the use of the park, its increased usage and its impact, particularly on health and wellbeing.

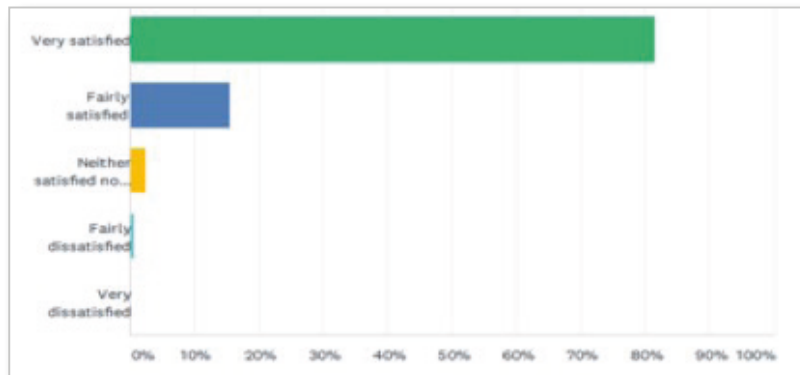
# Marketing and Communication

The key messages from the 2020 Visitor Satisfaction survey includes:

**1**  
**Please rate the following for the park:**  
**Answered: 175 Skipped: 14**

	VERY GOOD	FAIRLY GOOD	NEITHER GOOD NOR POOR	FAIRLY POOR	VERY POOR	TOTAL
The design and appearance of the park	84.00% 147	12.57% 22	2.29% 4	1.14% 2	0.00% 0	175
The standard of cleanliness of the park	60.00% 105	36.00% 63	2.29% 4	1.14% 2	0.57% 1	175
The maintenance of the park	76.30% 132	21.39% 37	1.73% 3	0.00% 0	0.58% 1	173
The facilities and/or services that are provided for children and their parents	61.85% 107	29.48% 51	7.51% 13	1.16% 2	0.00% 0	173
Overall impression of the park	79.31% 138	17.82% 31	2.30% 4	0.57% 1	0.00% 0	174

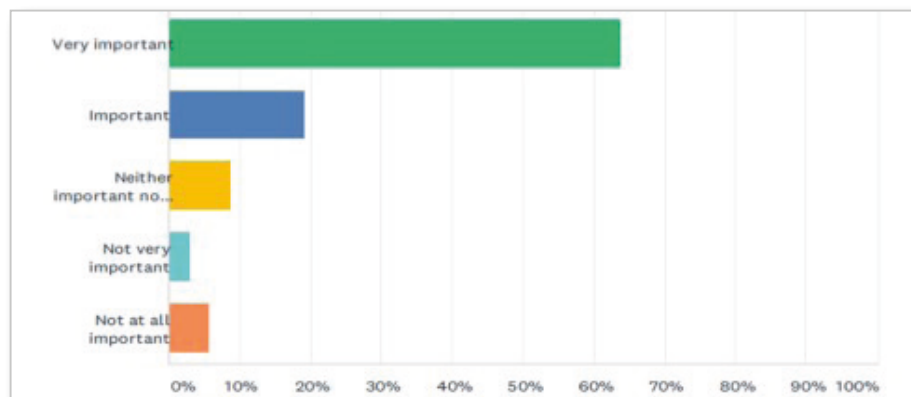
**2**  
**Overall, how satisfied are you with Leavesden Country park:**  
**Answered: 174 Skipped: 1**



**3**  
**Do you feel that...(see points within the table):**  
**Answered: 175 Skipped: 14**

	STRONGLY AGREE	AGREE	NEITHER AGREE NOR DISAGREE	DISAGREE	STRONGLY DISAGREE	DONT KNOW/NOT APPLICABLE	TOTAL	WEIGHTED AVERAGE
Your use of Leavesden Country Park enhances your quality of life	52.57% 92	41.14% 72	6.29% 11	0.00% 0	0.00% 0	0.00% 0	175	1.54
You have a good understanding of the heritage value of Leavesden Country Park?	46.51% 80	40.70% 70	6.98% 12	3.49% 6	1.16% 2	1.16% 2	172	1.71
That Leavesden Country Park has a positive impact on the local community?	63.22% 110	31.03% 54	5.17% 9	0.00% 0	0.00% 0	0.57% 1	174	1.42

**4**  
**How important to your health and well-being is the park?**  
**Answered: 174 Skipped: 15**





*Branded signage within the Park*

## Future of the Park

Through the National Lottery Fund Heritage project, the park has been fully rejuvenated and has received both county and national recognition in awards for tourism and community engagement. This needs to be preserved and built on in the following years and detailed in this management plan.

The project has thrived under the restrictions of Covid-19 and evidence shows that this open space is now more important than ever and needs to be cherished for future generations. Alongside council investment in the park, it is essential that the park continues to become embedded into the community ownership of the park. This will be achieved by:

- Assisting the Friends Of to become a constitutional group and lead the volunteering work within the park, supported by the Park Ranger.
- A rolling review of the activity programme and a development plan to draw targeted audiences into the park on education and environmental activities.
- To ensure the council continues to meet the needs of the ever changing visitor to the park.
- To continue to create opportunities for people to learn about the story of the park as a place of exploration and learning, waiting to be discovered.
  - Including the introduction of a digital trail. This will provide an extension to the physical sculptures and further learning opportunities about the history of the site, including linking back to key websites, such as the Heritage Hub.

Continued investment in the park will also be required to continue to deliver the high quality visitor experience, currently achieved at the park. This will include a review of the current infrastructure and recommendations on improvements needed over the next ten years.

Highlights include:

- Review of entrances and exits across the park
- Improving walking and cycling routes
- Planning in the long term for key features in the park, including the Heritage Trail, play facilities and the Leavesden HIVE
- Developing a biodiverse haven within the Horses' Field and introducing cattle grazing on the site
- New in-keeping, branded signage and interpretation on the Horses' Field

The District Council has a strong commitment to the environment and environmental sustainability and

recognises the impacts its operations have on the environment. Three Rivers District Council's dedication to protect the environment is reflected in Council policies, strategies, commitments and partnerships. Some of these initiatives include:

- peat will not be used on any of our sites
- pesticides will not be used unless there are no alternative means of control
- Only FSC timber is used across the district.
- All cleaning materials are phosphate free.

The trees across the site will also be managed through the Council's tree strategy and through this Management Plan, which will include the management of existing trees, the management of trees that need to be felled and the planting of any new or replacement trees.



## How will the Ten Year Vision of the Park be delivered?

The vision for the park over the next ten years, will be achieved by delivering the following key elements via the objectives below:

### A Welcoming Facilities

- To Provide an Inviting Park
- To Ensure the Park is Clean and Well Maintained
- To Ensure the Park is Accessible for All

### B An Award Winning Park

- To Retain Green Flag Accreditation
- To Monitor Visitor Feedback and Satisfaction Levels
- To Apply for Relevant Awards

### C Creating Biodiverse and Sustainable Environments

*\*This element includes conservation of natural, built and social heritage.*

- To Ensure Robust Environmental Management
- To Preserve the Biodiversity, Landscape and Heritage (natural, built and social)

### D Friendly Park Community

- To Understand and Engage the Community
- To Develop and Promote Marketing and Communications

### E Diverse and Educational Activity Programme\*

*\*The programme is delivered and detailed in the Activity Plan document, please see Appendix G Essential Reading for more details.*

- To Build On, Develop and Deliver a Diverse, High Quality Activity Programme Based on The National Lottery Heritage Fund Activity Plan Foundations
- To Effectively Market and Promote the Activity Plan to All in the Community

Each of these elements will have a key aim and detail how it will be achieved with a set of sub-headings and key objectives and outputs.

These will link in with the overall Three Rivers District Council's Corporate Framework and the Local Strategic Partnership's Community Strategy.

In addition, a full evaluation of the delivery of the activity programme, will be carried out in Winter 2021, led by independent, external specialists as part of the National Lottery

Heritage Fund requirements. The final evaluation report will be produced based on all the evidence collected at the end of the project, assessing the National Lottery Heritage Fund outcomes and project aims to judge the progress made. The report will serve as a milestone document for further planning of activities and resources as well as on the progress of the project.





## How will the Ten Year Vision of the Park be delivered?

## Welcoming facilities

**Overall Aim: Leavesden Country Park will be an inviting, clean and well maintained park for all to enjoy.**

**This aim will be to support the following Green Flag criteria:**

A Welcoming Place, Well Maintained and Clean and Marketing and Communication.

### To Provide an Inviting Park

Reference	Objective	Description	Department	When?
<b>A1</b>	To provide high quality internal signage across the park.	To regularly inspect signage including interpretation boards, maps, way markers, finger posts, noticeboards and welcome signs and to ensure these are regularly cleaned.	Environmental Protection	Visual inspection weekly, cleaned monthly during spring and summer
<b>A2</b>	To provide brown tourism signs directing people to the park	Review existing brown signs and identify additional locations, costs and resources to install more if necessary.	Trees and Landscapes and Regulatory Services	Year 3
<b>A3</b>	To ensure the website is up to date.	Review the website and ensure the information is current, re-freshed and up to date.	Leisure Marketing Manager and Trees and Landscapes	Monthly
<b>A4</b>	Review signage across the park.	Review signage across the park, including way markers/finger posts and any other identifying signage, including markers for specimen trees.	Trees and Landscapes	Year 1
<b>A5</b>	Introduce interpretation and signage within the Horses' Field.	To be in-keeping with the surrounding site, yet branded to ensure it links with the whole site.	Trees and Landscapes	Year 2

How will the Ten Year Vision of the Park be delivered?

## Welcoming facilities

### To Ensure the Park is Clean and Well Maintained

Reference	Objective	Description	Department	When?
<b>A6</b>	Litter will be cleared from the site.	Regular litter picks and emptying of bins across the site.	Environmental Protection	3 times a week during autumn and winter and 4 times a week during spring and summer.
<b>A7</b>	To deliver a programme of maintenance across the site.	The park will be maintained in accordance with the schedule of works, including grass cutting, wildflower management, woodland management and hedgerow management. This will also include maintenance and cleaning of the infrastructure across the park – benches, bins, pathways, signage etc.	Environmental Protection and Trees and Landscapes	Throughout the year
<b>A8</b>	To maintain outdoor leisure facilities and heritage trail.	A programme of inspections and maintenance of facilities including the main play area, natural play spaces, outdoor gym, mini multi-use games area, the Covid-19 Snake, The Garden, Remembrance Garden and Heritage Trail.	Environmental Protection and Leisure	Throughout the year in accordance with the agreed schedule of works.
<b>A9</b>	To maintain East Lane Cemetery.	Carried out in accordance with the programme of works detailed in the maintenance schedule.	Environmental Protection	Throughout the year
<b>A10</b>	To manage the installation of memorial plaques and benches.	To manage the process of installing memorial plaques at East Lane Cemetery, memorial plaques on benches within the park and memorial benches at agreed locations, following the requirements of the agreed policy.	Environmental Protection	As and when required
<b>A10</b>	Consistent street furniture across the park.	Review dog bins, litter bins and park benches to ensure consistent street furniture across the park.	Environmental Protection	In Year 14

How will the Ten Year Vision of the Park be delivered?

## Welcoming facilities

### To Ensure the Park is Accessible for All

Reference	Objective	Description	Department	When?
<b>A12</b>	Improve pathways across the park.	Survey pathways across the site, to include accessibility and opportunities for cycling. Identify a programme of works and resources to improve surfaces.	Trees and Landscapes, Regulatory Services, Properties and Leisure	Year 2 and Year 3
<b>A13</b>	Survey the main car park.	Survey the main car park to review car parking, drainage issues and consider improvements and resources.	Trees and Landscapes, Properties and Leisure	Year 2
<b>A14</b>	Consider widening the main entrance to the park.	Review the option to widen and enhance the main entrance to Leavesden Country Park. Identify resources for any suggested improvements.	Trees and Landscapes, Properties and Leisure	Year 3
<b>A15</b>	Improve Access to East Lane Cemetery.	Work with Hertfordshire County Council to clean and improve access on East Lane.	Trees and Landscapes, Properties and Leisure	Year 1
<b>A16</b>	Improve lighting across the site.	Review existing lighting and consider alternative options to provide a consistent and streamlined approach to lighting across the park.  Consideration to be given to sustainable lighting options.	Trees and Landscapes, Properties and Regulatory Services	Year 4
<b>A17</b>	Provide a wide range of facilities for the visiting public.	Work in partnership with the YMCA to ensure the continued delivery of: <ul style="list-style-type: none"> <li>• Café</li> <li>• Community Toilet</li> <li>• Cycle Hub</li> <li>• MUGA</li> <li>• 3G pitches</li> <li>• Community space for hire and delivery of activities</li> </ul>	Leisure and Landscapes, Properties and YMCA	Review annually

How will the Ten Year Vision of the Park be delivered?

## An Award Winning Park

**Overall Aim: Leavesden Country Park will be a flagship destination, consisting of high quality facilities, sustainably managed formal parkland and wildlife habitats.**

**This aim will be to support the following Green Flag criteria:** Marketing and Communication.

### To Retain Green Flag accreditation

Reference	Objective	Description	Department	Season
B1	Green Flag Submission.	To apply for Green Flag Award Status, ensuring all areas within the application are completed and updated.	Trees and Landscapes Leisure Marketing Manager	Winter – Annually
B2	Achieve Heritage Green Flag status.	To apply for the Heritage Green Flag status ensuring all areas within the application are completed and updated.	Trees and Landscapes Leisure Marketing Manager	Winter – Annually
B3	Maintain Green flag standards.	To regularly review the Green Flag and Heritage Green Flag standards and ensure the management plan implements these standards.	Trees and Landscapes	Throughout the year

### To Monitor Visitor Feedback and Satisfaction Levels

Reference	Objective	Description	Department	Season
B4	Complete Visitor Observation Surveys	Online survey to be set up and distributed to the local community and through social media.	Trees and Landscapes and Leisure Marketing Manager	Annually – Spring
B5	Complete Visitor Observation Surveys..	Friends Of to complete the visitor observation survey.	Friends Of	Annually – Spring
B6	Provide a number of mediums for people to feedback.	Online reporting, ad-hoc reporting to staff on site, complaints and praise process and through email.	Trees and Landscapes	Throughout the year

### To Apply for Relevant Awards

Reference	Objective	Description	Department	Season
B7	To review opportunities to apply for relevant awards.	Submit application for awards including Visit Herts, Arts Awards, Community Awards and others that are relevant.	Trees and Landscapes and Leisure Marketing Manager	Monitored throughout the year

## How will the Ten Year Vision of the Park be delivered?

# Creating biodiverse and sustainable environments

\*This element includes conservation of natural, built and social heritage

**Overall Aim: Leavesden Country Park will conserve and enhance wildlife, landscape and heritage features and all aspects of site management are undertaken with sustainability as a guiding principle.**

**This aim will be to support the following Green Flag criteria:** Biodiversity, Landscape and Heritage (natural, built and social), Environmental Management and Marketing and Communication.

### To Ensure Robust Environmental Management

Reference	Objective	Description	Department	Season
C1	A sustainable and environmentally friendly park.	Ensure all site activities adhere to TRDC sustainability and environmental policies, including all work undertaken by contractors.	Trees and Landscapes Leisure	Throughout the year
C2	Waste Minimisation.	To support all partners within the park to reduce the amount of waste produced e.g. reusable bottles and cups.  To support the water refill campaign.	Trees and Landscapes Leisure	Throughout the year
C3	Managing Environmental Impact.	Not using peat or pesticides and only using FSC timber.  All cleaning materials are phosphate free.	Trees and Landscapes, Environmental Protection and other partners.	Throughout the year
C4	Promote cycling to and within the park as part of an Active Travel scheme for the area.	Marketing and communications available both online and within the site to promote walking and cycling.	Regulatory Services	Throughout the year
C5	Market recycling methods of public litter bins.	Marketing on litter bins across the park to explain waste is separated and recycled once collected.	Environmental Protection	Year 1

### To Preserve the Biodiversity, Landscape and Heritage (natural, built and social)

Reference	Objective	Description	Department	Season
C6	Enhance grassland habitats to benefit pollinators  Establish bee friendly areas site wide, including signage for public education.	Areas to be created and maintained across the park.	Trees and Landscapes Leisure	End of Summer
C7	Wildflower areas created across the park.	Wildflower areas created within the park as detailed on the management maps.  Long grass areas left around trees.	Environmental Protection	Throughout the Year

## How will the Ten Year Vision of the Park be delivered?

## Creating biodiverse and sustainable environments

\*This element includes conservation of natural, built and social heritage

### To Preserve the Biodiversity, Landscape and Heritage (natural, built and social)

Reference	Objective	Description	Department	Season
<b>C8</b>	Improve species and structural diversity of woodlands.	To ensure the protection of breeding birds, felling operations will be completed outside of the recognised bird breeding season. Coppicing and Halo thinning to take place and retain deadwood for habitat purposes.	Trees and Landscapes	Autumn / Winter
<b>C9</b>	Maintain range of scrub habitats, whilst preventing further encroachment into grasslands.	Areas of rough grassland should be retained to provide habitat for small mammals and invertebrates.	Environmental Protection Trees and Landscapes	End of summer
<b>C10</b>	Enhance and maintain wildlife habitats.	Includes, but is not limited to: hibernacula, hedgehog houses and bug hotels.  Retain deadwood to create spaces.	Trees and Landscapes	Throughout the year
<b>C11</b>	Maintain parkland trees as detailed within the Council's Tree Strategy.	Managed with the aim of prolonging the life of trees.  Where trees need to be felled, retain deadwood on site as far as possible.	Trees and Landscapes	Autumn / Winter
<b>C12</b>	Review and replace parkland trees as and when required as detailed within the Council's Tree Strategy.	The planting of new specimen trees to replace older trees as they age or die-off.	Trees and Landscapes	Throughout the year
<b>C13</b>	Investigate the feasibility to create a Wildlife Pond with Dipping Platform.	Review the option of installing a pond. Research costs and funding, location options, feasibility of drainage issues and consider safety implications.	Trees and Landscapes	Year 3 Late Summer-Autumn
<b>C14</b>	Areas of existing botanical interest such as populations of common spotted and bee orchid will be protected.	Identify locations where they are present and ensure future maintenance protects these species.	Trees and Landscapes Environmental Protection	Year 1 and throughout the year

**How will the Ten Year Vision of the Park be delivered?**

## Creating biodiverse and sustainable environments

\*This element includes conservation of natural, built and social heritage

### To Preserve the Biodiversity, Landscape and Heritage (natural, built and social)

Reference	Objective	Description	Department	Season
<b>C15</b>	Establish conservation grazing on the Horses' Field.	Agree arrangement of fencing and gates and install, along with water trough. Initiate grazing.	Trees and Landscapes	Autumn / Winter
<b>C16</b>	Continue to develop Natural Heritage programme.	Develop Wildlife Education programmes. Planting schemes by volunteers such as Friends of. Introduce tree markers within the Edwardian Garden.	Leisure Trees and Landscapes Volunteers such as Friends of	Ongoing
<b>C17</b>	Maintain and conserve the Built Heritage.	Deliver the maintenance programme. Eg: Orphanage Railings, Font, Edwardian Garden Steps, East Lane Cemetery, Covid 19 Snake.	Grounds team Facilities team	Ongoing
<b>C18</b>	Continue to develop Social Heritage.	Deliver Education on history including walks & talks, open days etc. Continue to collect oral history recordings, artefacts or memorabilia relating to Minds, Machines and Movies.	Leavesden Hospital History Association Abbots Langley Leavesden History Society University of Hertfordshire – Heritage Hub Hertfordshire Archives and Library Service Museum Service	Ongoing

## How will the 10 Ten Year Vision of the Park be delivered?

## Creating biodiverse and sustainable environments

\*This element includes conservation of natural, built and social heritage

**Overall Aim: Leavesden Country Park will engage and involve the local community**

**This aim will be to support the following Green Flag criteria:** Community Involvement and Marketing and Communication.

### To Understand and Engage the Community

Reference	Objective	Description	Department	When?
<b>D1</b>	Develop 'Friends of Leavesden Country Park' to increase community involvement in site management.	Develop and grow the 'Friends Of' with training to be a self-sustaining organisation.	Leisure Trees and Landscapes	Monthly session Communication throughout the year Annual training session
<b>D2</b>	Leavesden Hospitals History Association (LHHA).	Continue to work with LHHA to encourage its continuity at the HIVE, promoting the sites heritage and delivering historical walks and talks.	Leisure Trees and Landscapes	Throughout the year
<b>D3</b>	Maintain and develop connections with community groups in the local area.	Continue relationships with schools, uniformed organisations and others to continue engagement in the park and use of the HIVE. Implement site activity plan and education program.	Leisure Marketing Manager Trees and Landscapes	Ongoing
<b>D4</b>	Investigate working with Youth Offenders and Probation Service.	Engage the Youth Offenders and Probation Service in maintenance works across the park.	Trees and Landscapes Environmental Protection	Throughout the year
<b>D5</b>	Continue to work in partnership with stakeholders to ensure a diverse and attractive range of activities is available.	Regular meetings with site stakeholders. Continue shared marketing and branding across the site. Update communication to stakeholders, including Councillors.	Trees and Landscapes Leisure YMCA Woodlands Café Leavesden Cycle Hub Police Community Support Officers	Throughout the year



## How will the Ten Year Vision of the Park be delivered?

## Creating biodiverse and sustainable environments

\*This element includes conservation of natural, built and social heritage

### To Understand and Engage the Community

Reference	Objective	Description	Department	When?
D6	Engage with all park users.	Visitor and user surveys. Complaints and Praise Procedure.  Encourage appropriate park usage with additional signage, including updated bylaws.  Keep people informed of parks activities and works by ensuring noticeboards & social media are up to date.	Leisure Trees and Landscapes Environmental Protection Leisure Marketing Manager	Throughout the year
D7	Ad-hoc communication with park users.	Park Ranger, Tree Officers and Environmental Protection staff to engage and speak to users of the park when on site.	Trees and Landscapes Environmental Protection	Throughout the year

### To Develop and Promote Marketing and Communications

Reference	Objective	Description	Department	When?
D8	To ensure the website is up to date.	Review the Council websites and other local websites and ensure the information is current, refreshed and up to date.	Leisure Marketing Manager Trees and Landscapes	Throughout the year
D9	Promote site activities and events.	Keep people informed of parks activities and works by ensuring noticeboards & social media are up to date.  Updating the HIVE noticeboard and café notice board.	Leisure Marketing Manager Trees and Landscapes	Throughout the year
D10	Implement site Activity Plan (Section E).	To promote awareness and interest in the park.  Develop and establish an activity plan for all ages, groups and abilities.	Leisure Trees and Landscapes	Throughout the year

## How will the Ten Year Vision of the Park be delivered?

## Diverse and Educational Activity Programme

**Overall Aim: Leavesden Country Park will provide a range of educational and community based activities to explore, discover and learn about the site's environmental and historical heritage.**

**This aim will be to support the following Green Flag criteria:** Community Involvement and Marketing and Communication.

### To Build On, Develop and Deliver a Diverse, High Quality Activity Programme Based on The National Lottery Heritage Fund Activity Plan Foundations.

\*The programme is delivered and detailed in the Activity Plan document, please see Appendix G Essential Reading for more details.

Reference	Objective	Description	Department	When?
E1	To ensure that the activity programme meets the diverse groups in the community.	To plan and develop the overarching programme to ensure that these targeted groups are engaged with and delivered to: <ul style="list-style-type: none"> <li>• Education sector</li> <li>• Families</li> <li>• People with a disability</li> <li>• People with a mental health need</li> <li>• Older visitors</li> <li>• Special interest</li> </ul>	Leisure Trees and Landscapes	On going
E2	To develop and deliver a community programme.	Regular programme of activities to cover wildlife/art/wellbeing.	Trees and Landscape Leisure Development	Throughout the year including each half term, Summer and Easter holidays
E3	To deliver and engage with schools to offer an Education programme.	Develop core subjects which can be delivered against the curriculum (inc Home Schoolers) and uniformed groups to include but not limited to: <ul style="list-style-type: none"> <li>• Habitats</li> <li>• Biodiversity</li> <li>• Plant Identification</li> <li>• Bat Walks</li> <li>• Lifecycles</li> <li>• Conservation</li> </ul>	Trees and Landscape Leisure Development	Throughout the school year

How will the Ten Year Vision of the Park be delivered?

## Diverse and Educational Activity Programme

### To Build On, Develop and Deliver a Diverse, High Quality Activity Programme Based on The National Lottery Heritage Fund Activity Plan Foundations.

\*The programme is delivered and detailed in the Activity Plan document, please see Appendix G Essential Reading for more details.

Reference	Objective	Description	Department	When?
E4	To maintain and develop the Friends of Leavesden Country Park.	To plan and deliver an annual programme of activities for the Friends of group so that the park is enhanced. The programme should contain elements of training.  To nurture a champion within the group who can take on future leadership.	Trees and Landscapes	Monthly meetings  Regular email contact
E5	To ensure that the programme includes targeted activities for specific groups.	Commit to reaching targeted groups with interesting and appropriate activities including Young Carers, SEN schools,	Trees and Landscape  Leisure Development	Young Carers: each half term, summer and Easter holidays.  SEN schools: to offer termly visits to the HIVE
E6	To actively seek and nurture new Partners to hire or deliver from the HIVE and enhance the Activity Plan.	To develop the partnership with the Healthy Hub so that the HIVE is a base.  To explore delivery models with the Herts and Middlesex Wildlife Trust.  To welcome hosting U3A groups with specific interest in Heritage, History, Biodiversity.	Trees and Landscape  Leisure Development	Regular meetings to be arranged throughout the year with all partners.  U3A: to host monthly meetings at the HIVE for relevant groups
E7	Monitoring and Evaluation of all activities.	To complete monitoring and evaluation of activities. To include user details, knowledge assessment and satisfaction.	Trees and Landscapes  Leisure	Throughout the year

How will the Ten Year Vision of the Park be delivered?

## Diverse and Educational Activity Programme

### To Effectively Market and Promote the Activity Plan to All in the Community

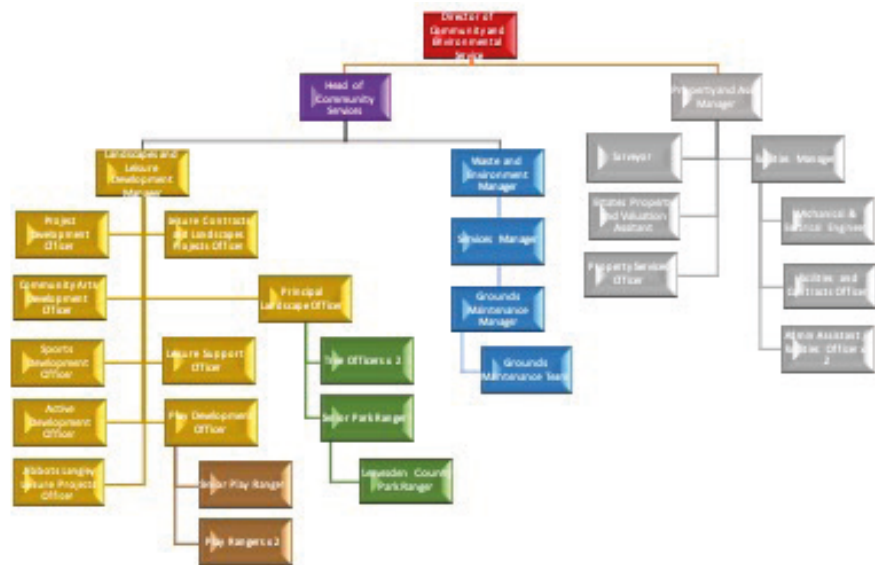
Reference	Objective	Description	Department	When?
<b>E8</b>	Maintain and develop the LCP website to reflect the exciting activity plan.	Regularly updating the website to ensure a fresh look with all relevant materials.  Should activities be forced to close due to unforeseen circumstances, the website must include online activities and links for interested parties.	Trees and Landscape, Leisure Development  Marketing Manager	Throughout the year including each half term, summer and Easter holidays
<b>E9</b>	Design appropriate marketing material for all sectors of the community.	Regularly review and use different marketing style so that social media is used, printed material, email address groups and website channels are all used to reach targeted audiences.	Marketing manager  Trees and Landscape, Leisure Development	Throughout the year
<b>E10</b>	Adhere to the branding guidelines in all marketing messages.	Follow the branding guidelines and encourage all onsite partners to do so.	Marketing Manager	Throughout the year
<b>E11</b>	Manage the Booking system for all activities.	Adhere to the booking system for all activities.	Trees and Landscape, Leisure Development	Throughout the year

## Resources and Funding

The current staffing structure overseeing the management of Leavesden Country Park can be split into 3 sections:

- Conservation, tree management and biodiversity
- Maintenance
- Leisure and recreational facilities

All of these sections sit within the directorate of Community and Environmental Services and under the Head of Community Services and Head of Properties:



Existing staff resourcing is funded directly by Three Rivers District Council, with the exception of the Leavesden Country Park, Park Ranger, who is funded from the National Lottery Heritage Fund. This post ends on the 31 October 2021, however in order to continue the work around conservation, education and community involvement, there will need to be a plan in place to sustain this role for the future.

Posts within the remit of the Landscapes and Leisure Development Manager, along with the Principal Landscape Officer and specifically relating to Leavesden Country Park, are responsible for the strategic management of the conservation within the park, developing the biodiversity of a variety of habitats, managing the tree stock as well as leading on an education programme for the local community.

Leisure Development Officers have been leading on the National Lottery Heritage Fund project to rejuvenate

the park into a destination site. Over the next ten years, the Leisure Development team will review the existing infrastructure and recreational facilities to ensure they continue to meet the needs of the community as well as delivering a range of activities promoting health and wellbeing. Staff within Environmental Protection are responsible for the day to day maintenance of the park and this will include roles such as:

- Inspecting play equipment and the Heritage Trail
- Grass cutting
- Litter picking
- Minor works and repairs
- Hedge and shrub cutting
- Cut and lift of meadow land where required
- Maintenance of the two key garden areas
- Cleaning and checks of Leavesden HIVE

Staff within Property and Facilities are responsible for the management of assets across the park. This includes the lease agreement with the YMCA (and subsequently the Leavesden Cycle Hub and Woodlands Café), car park area, lighting and Leavesden HIVE.

In addition, other departments across the Council support the work at Leavesden Country Park and will support the Management Plan over the next ten years. This includes links with the Council's Walking and Cycling Strategy, Community Partnerships and the establishment of a pop up Healthy Hub at Leavesden HIVE, working with MIND as well as Regulatory Services, where planning consent for works may be needed.

## Resources and Funding

As with many areas in Local Government, the requirement is to focus on generating additional income to mitigate reductions in funding from Central Government, rather than impact any service delivery. With that in mind, funding for the management of Leavesden Country Park comes from, and will continue to come from, a variety of sources which includes capital and revenue funding from Three Rivers District Council's central budget supported by external funding. A good example of funding to support the development programme of a park or outdoor space, was securing additional funding from the National Lottery Heritage Fund and Warner Bros. Studios Leavesden. This meant that we were able to extend service delivery and enhance the site over a 3

year period. Alongside S106 funding from a recent housing development, ensured the delivery of an extensive heritage restoration, conservation and community education programme, including capital works and a three year activity programme through to Oct 2021.

The main elements of the funding bid were:

- Capital works to build a bespoke Heritage and Wildlife Centre, The HIVE, as a hub for the heritage (built, social and natural) and wildlife community education programme
- A Park Ranger to deliver the community wildlife education programme and develop the Friends of Leavesden Country Park
- A diverse Activity Plan to educate, train and engage the local community with the heritage and wildlife of Leavesden Country Park
- Restoration works to reflect the heritage of the park
- Conservation works to encourage biodiversity and create new and varied habitats for a wide range of wildlife



## Resources and Funding

### Enhanced Management and Maintenance

As a result of the project, increased investment is required in order to manage and maintain the park due

to the improvements made. The following table details the uplift in Management costs over the next 5 years.

*The table below is based on estimates at this time and is subject to available resources and funding available moving forward.*

Expenses for the Park						
Item	Base	Year 1	Year 2	Year 3	Year 4	Year 5
Staff Management Costs	£16,749	£17,251	£41,769	£43,022	£44,313	£45,642
Landscape Maintenance	£62,510	£68,248	£70,295	£72,405	£74,576	£76,814
Leavesden HIVE	£0	£3,863	£3,978	£4,098	£4,221	£4,347
Heritage Trail	£0	£515	£530	£546	£563	£580
Street Furniture/Signage	£0	£515	£530	£546	£563	£580
Miscellaneous	£0	£1,545	£1,591	£1,639	£1,688	£1,739
<b>TOTAL</b>	<b>£79,259</b>	<b>£91,937</b>	<b>£118,693</b>	<b>£122,256</b>	<b>£125,924</b>	<b>£129,702</b>
Enhanced Maintenance Costs	£0	£10,300	£10,607	£10,927	£11,255	£11,594
<b>TOTAL Over 5 Years</b>	<b>£54,683</b>					

## Resources and Funding

### Council Budgets

Funding for the conservation, tree management and biodiversity, including the staff management, are covered in the budget managed by the Landscapes and Leisure Development Manager. This is set and agreed at the Policy and Resources Committee meeting based on the upcoming year's programme of works.

The main Parks and Open Spaces Revenue budget covering maintenance, sits with the Environmental Protection team and this includes vehicle management, equipment and staffing of the Environmental Protection team to maintain the park day to day and maintenance or replacement of small value works.

Works to any buildings or assets within Park and Open Spaces such as pavilions, toilets or car parks and any associated utility bills, is catered for within the Property Management budget.

Any larger maintenance works, or works identified through the operational maintenance checks, are managed via the Capital budget, which is planned on a district basis rather than individual park or open space, and agreed at Leisure, Environment and Community Committee and subsequent Policy and Resources Committee. Match funding is sought wherever possible, which may be from partnership working with Parish Councils, utilising Community Infrastructure Levy (CIL funding, previously known as s106 funding) or seeking external funding

from other stakeholders or funding bodies such as Public Health, Sporting bodies or National Lottery Funding.

Leisure and Recreational activities that take place in parks and open spaces, are funded from revenue budgets within the Leisure Development team, such as Community Arts, Play, Sport or Active Communities.

The Action Plan shows not only the required tasks, targets and responsibilities for the management of the site, but also the agreed budget. Where improvement of the site or its facilities are required, this is identified and the budget is agreed using the project management plans in place for Three Rivers District Council. Where there is no cost or the task requires no additional funding and is completed using Council staff and the staffing costs are covered using the above details on revenue budgets.

Any income generated within parks, e.g. activities, hire of grounds, filming, etc. and sports pitches and buildings fees, goes towards the budget stated above.

There are a number of volunteer organisations that work in partnership with the Council to deliver activities and support the work around the management of the park, such as the Friends of Leavesden Country Park, volunteers at parkrun and the Leavesden Hospitals History Association volunteers. Although materials, equipment and training costs are provided by the Council, the volunteer working hours offered, are considered to be a form of assisted funding as associated costs of volunteer management.

There remains the opportunity in the future for the Friends of Leavesden Country Park to begin fundraising to support their activities, as they become a more constituted organisation with the support of the Park Ranger.

The Council continues to face financial challenges and therefore needs to continue to seek external funding and generate additional income.





## Reviewing and Managing

The new Leavesden Country Park Management Plan will follow on from the positive and successful work previously carried out on the site. It will be a simple, easy to read plan, accessible to interested members of the public and for use by Three Rivers District Council officers to help guide the work of Environmental Protection, contractors and volunteers.

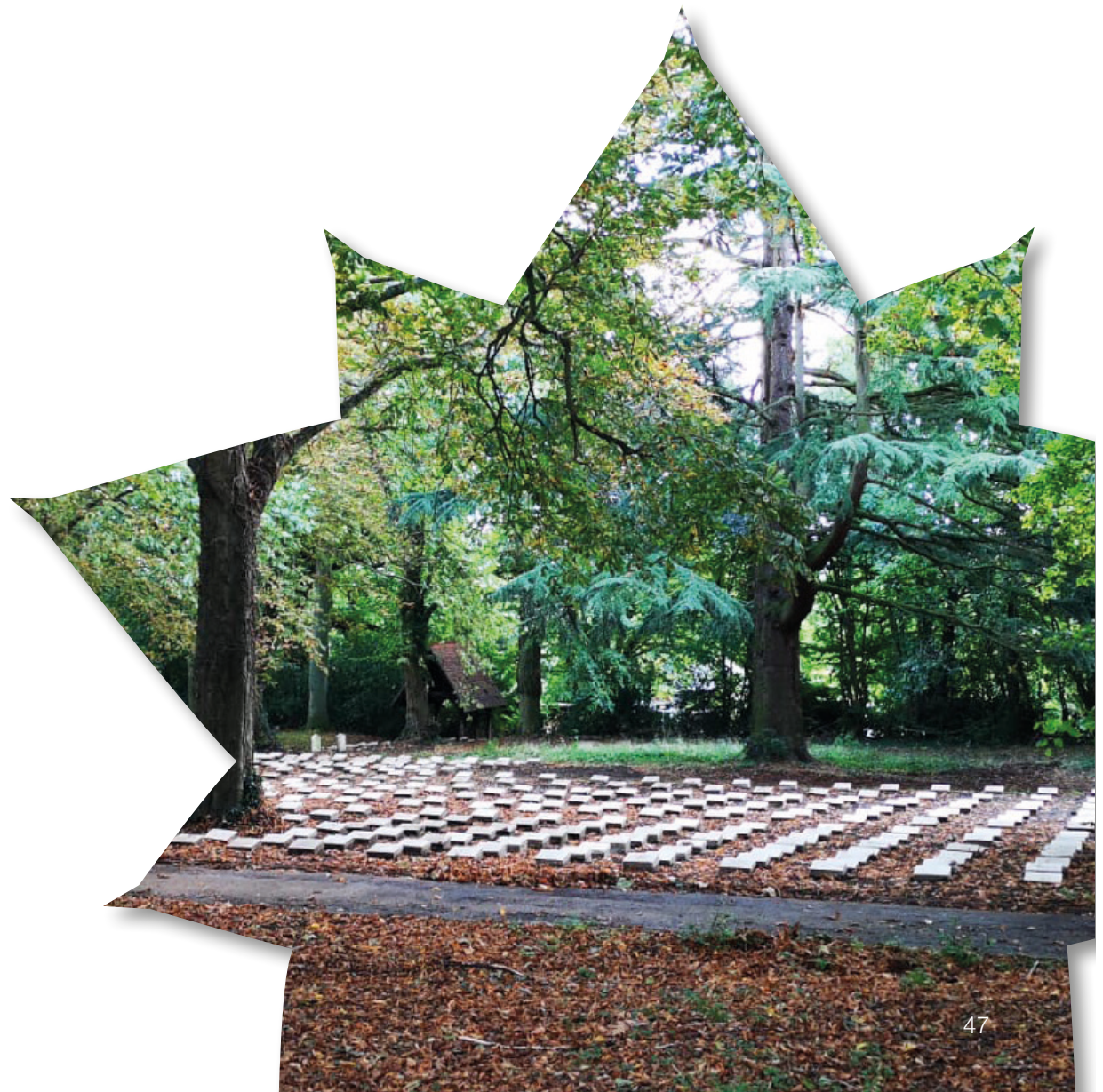
The plan will include annual management maps to show the actions planned for each year with the resulting change represented on the map for the following year. The document will be reviewed annually

to ensure it remains effective and relevant. The new plan process will assist in making decision and help to agree how Leavesden Country Park is managed. It will identify works, provide specifications and enable funding and resources to be allocated for improvements.

The Leavesden Country Park Management Plan 2021-2031, including the Horses' Field and East Lane Cemetery, will be reviewed annually between Trees and Landscapes, Environmental Protection and Leisure Development, during the autumn period. This review

will consider the planned activities and associated budgets for the coming year, reflect on the previous year and make any necessary adjustments to ongoing maintenance regimes.

Additional capital expenditure for tasks will be identified and relevant funding procedures followed in order to deliver these projects.

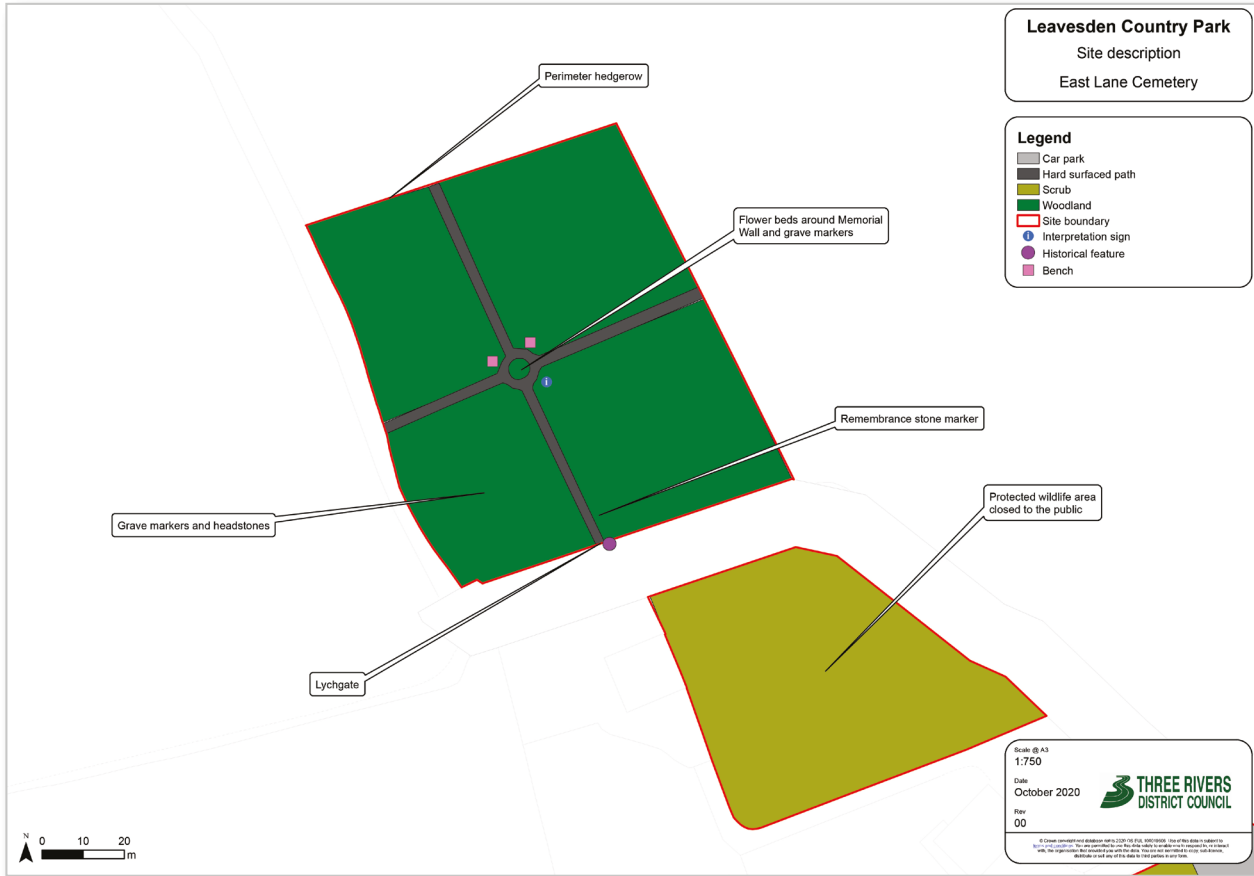


## Appendices

- A Mapping
- B Maintenance Regimes
- C Ten Year Capital Programme
- D Wider context: Policies and Strategies that relate to the country Park
- E Licences and tenants within the country park
- F Health and Safety: building maintenance schedule and relevant risk assessments
- G Essential Reading - National Lottery Heritage Fund Activity Plan and Conservation Plan



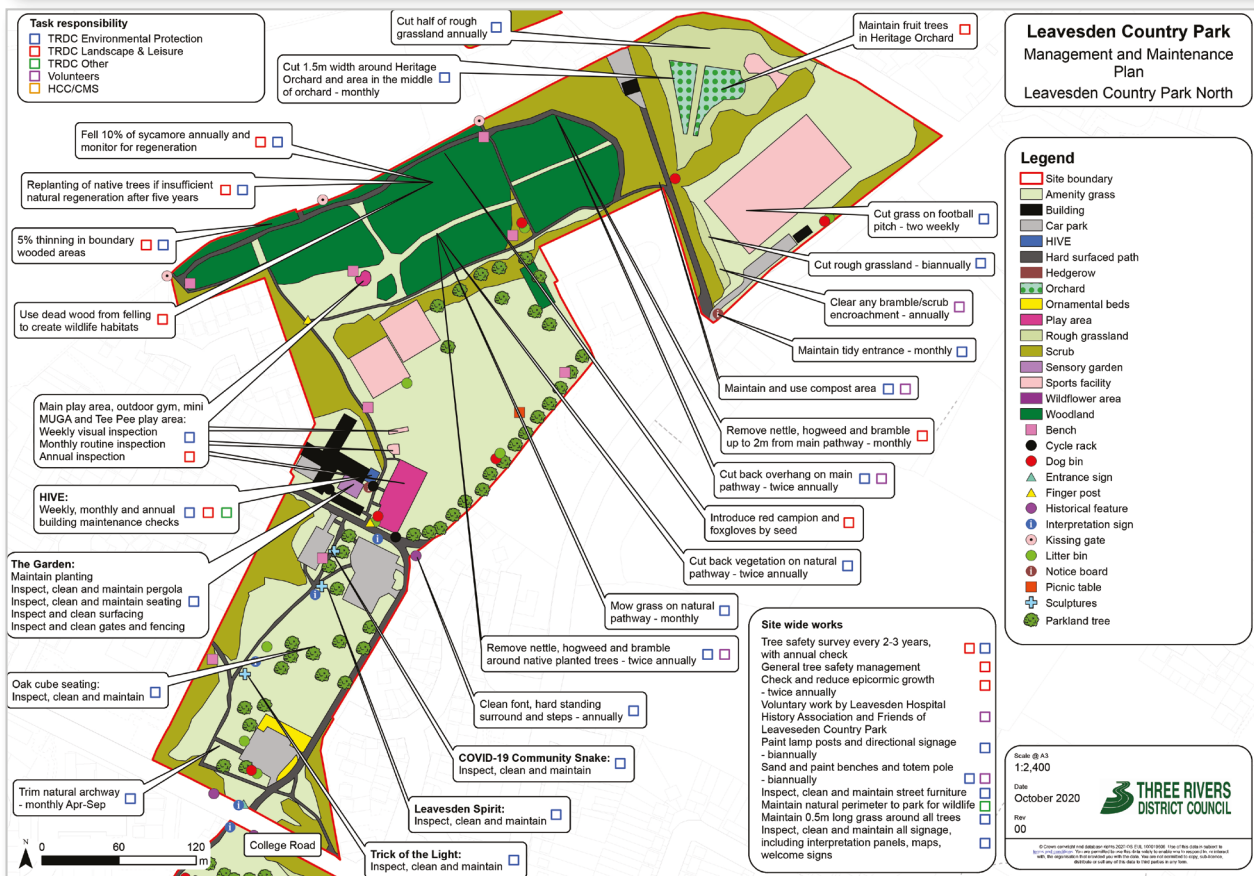
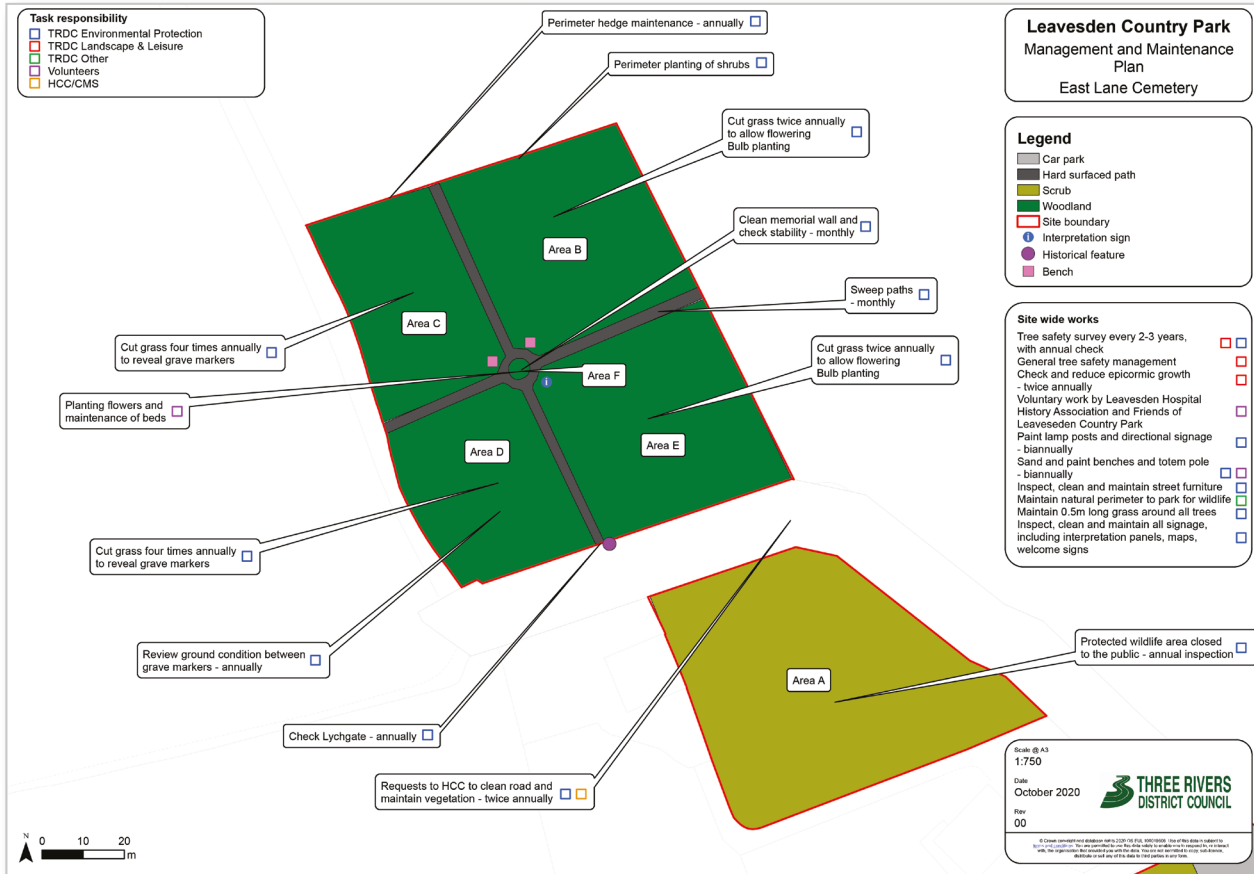
# Appendices A



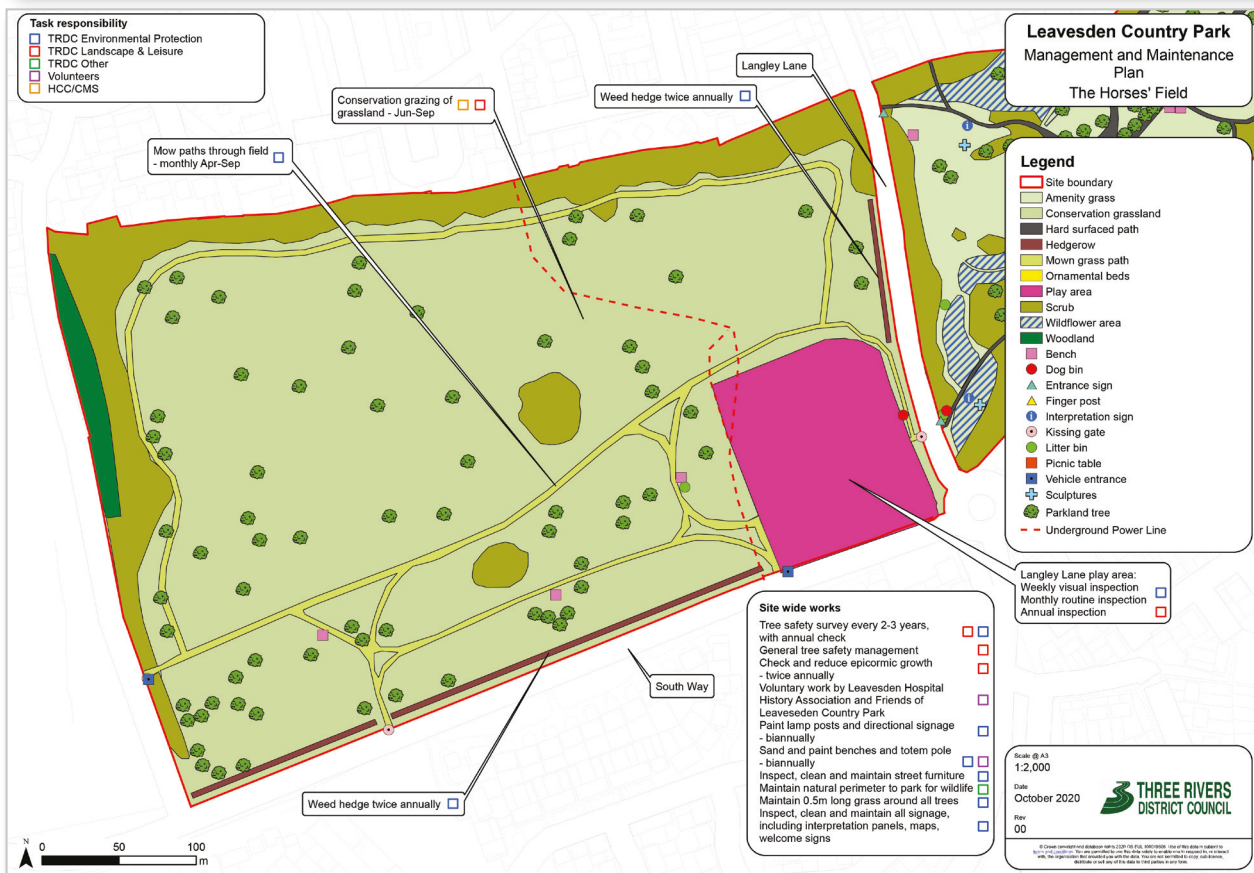
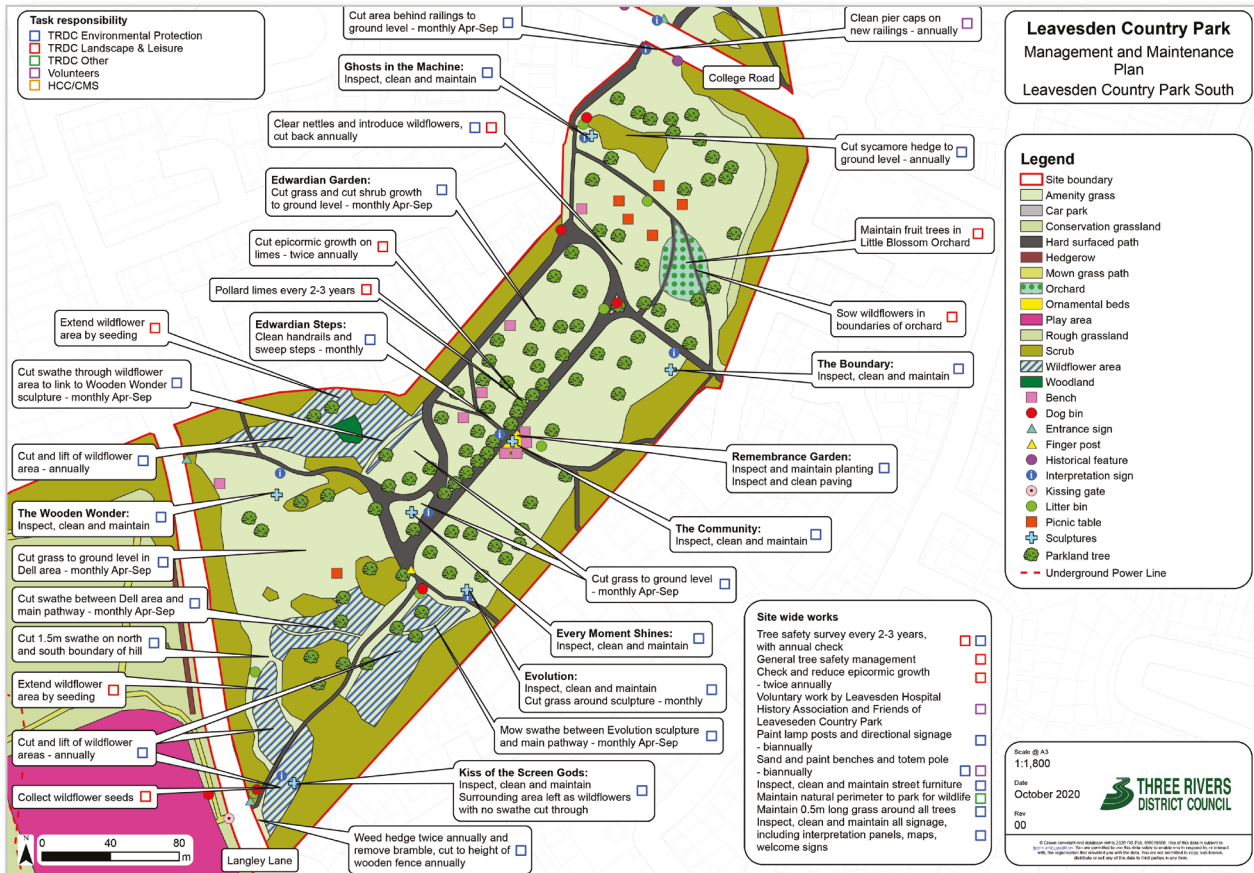
# Appendices A



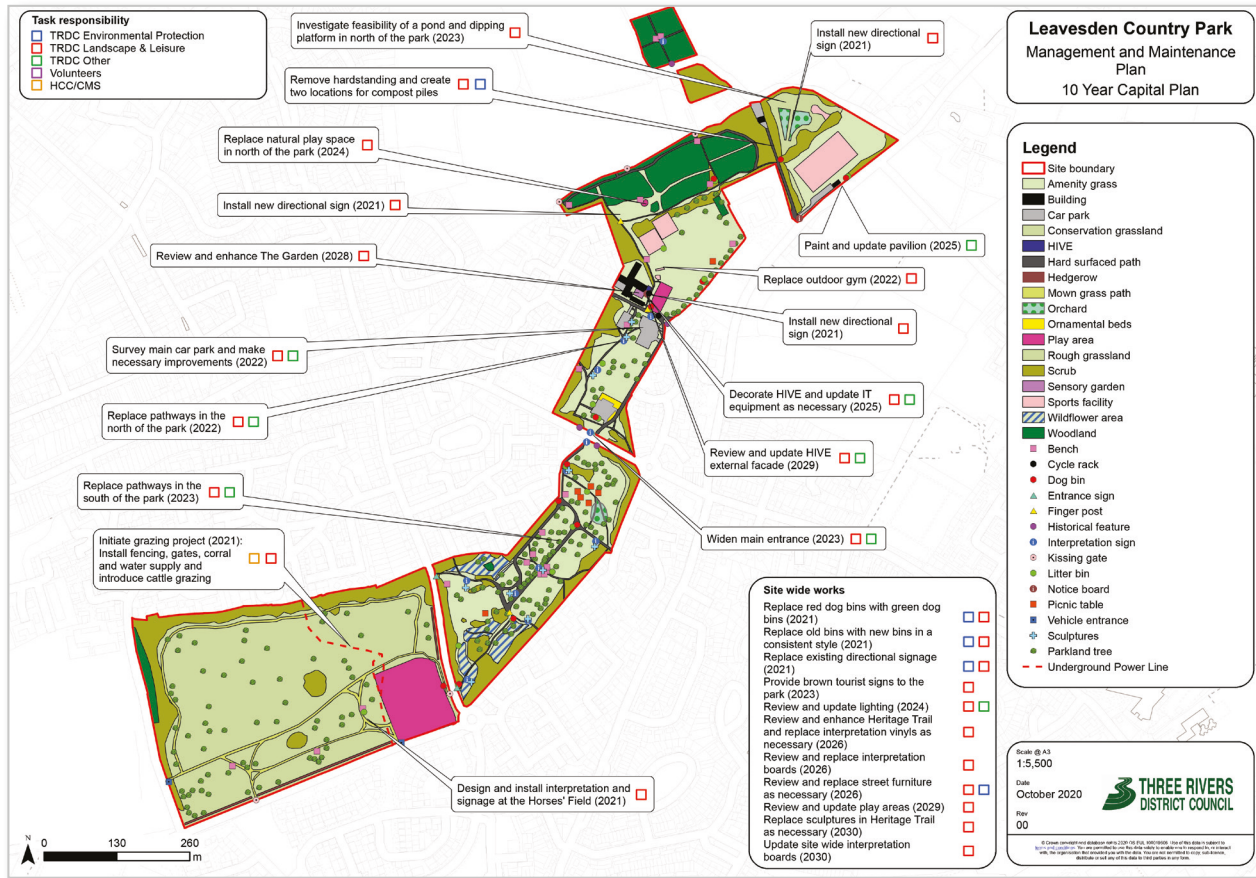
# Appendices A



# Appendices A



# Appendices A



# Leavesden Country Park Maintenance Schedule

\*Image number relates to a photo of the area and will be shared with Grounds Maintenance as part of their management and maintenance of the site and are not included as part of consultation.

### Key:

EP: Environmental Protection - T&L: Trees and Landscapes - LHHA: Leavesden Hospital History Association -  
HCC: Hertfordshire County Council - L&L: Leisure and Landscapes

## East Lane Cemetery

Details	When	Who	*Image
<b>Area B and E</b> Grass and flower areas left to flower with bulbs being planted to bring colour to the shaded site and grasses being left to grow.	<ul style="list-style-type: none"> <li>• Cut twice a year – once in May and once at the end of August.</li> <li>• Need to manage the nettles throughout the season.</li> <li>• Additional bulbs planted to include daffodils, snowdrops and bluebells.</li> <li>• Wildflower seeds such as Black knapweed and foxgloves to be planted.</li> </ul>	EP	1
<b>Area C and D</b> Areas to be strimmed and kept low so that the grave markers can be seen.	<ul style="list-style-type: none"> <li>• 4 times per year.</li> <li>• All site to retain a 1m edge of natural growth.</li> <li>• Remove early tree growth.</li> </ul>	EP	2
<b>Area D Grave markers</b> Awareness of how the ground looks between each grave marker. Action to be considered if it looks messy or no grass.	Review annually.	EP	3
<b>Paths</b> All paths to be swept after each cut and cleared of leaf litter.	Monthly.	EP	4
<b>Tree maintenance Survey</b> To ensure that trees are healthy and safe. (free from deadwood, damaged/broken branches and having light and air are able to circulate).	Biannual survey (or other cycle depending of the next survey results). Annual check and action taken when necessary.	T&L/ EP	5
<b>General management</b> Works resultant from the biannual survey and any urgent works that can occur.	Ideally between November and February.	T&L	
<b>Tree epicormic growth</b> Check and reduce any epicormic growth on all trees.	Twice per year outside of bird nesting season.	T&L	6



# Leavesden Country Park Maintenance Schedule

**Key:**

EP: Environmental Protection - T&L: Trees and Landscapes - LHHA: Leavesden Hospital History Association - HCC: Hertfordshire County Council - L&L: Leisure and Landscapes

## East Lane Cemetery

Details	When	Who	*Image
<p><b>Area F</b> Planting of flowers and maintenance of beds by the Friends of LHHA.</p>	Throughout the year	LHHA	7
<p><b>Central Area</b> The central memorial wall with engraved plaque needs to be cleaned and checked for stability. Check benches. Check and clean interpretation.</p>	Each monthly visit Monthly Monthly	EP EP EP	8
<p><b>Perimeter planting</b> Replanting of the bushes currently stored at the cemetery – planting location to be discussed due to shaded areas.</p>	Replanted and then site checked annually	EP	9
<p><b>Perimeter hedge</b> Use the hedge flail tractor to do the external side of the Holly hedge and do some replant in the gaps with Yew. The height of the holly hedge should be reduced too. The internal side of all hedges should be trimmed once a year to maintain a tidy appearance of the area.</p>	Once per year	T&L/ EP	10
<p><b>Voluntary work</b> There are two volunteering strands that can assist in the maintenance of the Cemetery: Leavesden Hospital History Association and the Friends of Leavesden Country Park.</p>	Twice per year these two organisations need to co-ordinate maintenance work at the site	LHHA Friends of LCP	11
<p><b>East Lane</b> Regular request to Herts County Council to clean the road and maintain any hedgerows and overhanging trees on the perimeter of the road.</p>	Twice per year	EP /HCC	12
<p><b>Lychgate</b> Annual check: uprights and tiles.</p>	Annually	EP	13
<p><b>Original Cemetery</b> Closed to the public Natural wildlife area.</p>	Annual inspection	EP	13A

# Leavesden Country Park Maintenance Schedule

**Key:**

EP: Environmental Protection - T&L: Trees and Landscapes - LHHA: Leavesden Hospital History Association -  
HCC: Hertfordshire County Council - L&L: Leisure and Landscapes

## Leavesden Country Park - North

Details	When	Who	*Image
<p><b>Heritage Orchard</b> 1.5m width to be mown around the outside of the Heritage Orchard. Grass to be cut once a month. (if necessary, this is not to be maintained as an amenity grassland area and the grass can grow up to 4cm long). Area to be mown in the middle (for a picnic space).</p>	<p>Between April – October Every 2 years, mow the rank grassland and leave on site: Year 1 L hand side Year 2 R hand side Year 3 L hand side Year 4 R hand side</p>	EP	14
<p><b>Heritage Orchard</b> Manually clear around base of the trees to remove weeds. Prune apples and pears. Prune cherries and plums. Monitor, replace or remove when necessary the guards. Remove sap suckers that grow below the formed crown. To sow the boundaries with mix of wildflowers but not with grass.</p>	<p>Throughout the year Between November and February Between May and July Spring for stone fruit and Winter for apples and pears Autumn</p>	<p>T&amp;L T&amp;L T&amp;L T&amp;L</p>	
<p><b>Football Pitch</b> Grass cut every 2 weeks Perimeter of the football pitch is left natural.</p>	Between March/April and Sept/Oct (weather dependent)	EP	16
<p><b>Football Pitch – Southern End</b> Mow the rank grassland and leave on site. Clear any woodland / bramble growth around the southern end and adjacent to the car park (football pitch side).</p>	<p>Every two years Once a year between November and February</p>	EP	17
<p><b>Woodside Road main entrance</b> Cut back weeds to ground level Entrance to be kept tidy.</p>	Once a month	EP	18

# Leavesden Country Park Maintenance Schedule

**Key:**

EP: Environmental Protection - T&L: Trees and Landscapes - LHHA: Leavesden Hospital History Association -  
HCC: Hertfordshire County Council - L&L: Leisure and Landscapes

## Leavesden Country Park - North

Details	When	Who	*Image
<p><b>Compost Area</b> To be kept cut back and used as a location to compost on site. Friends of to rotate between the two piles on a quarterly basis.</p>	<p>Twice a year – April and June Quarterly (once per season)</p>	<p>EP L&amp;L</p>	19
<p>Fell 10% of the area of Sycamore every year and leave the area for 5 years and monitor regeneration of native species, if after 5 years we do not have 5% of regeneration coverage, start to plant native trees. All the boundary wooded areas need 5% thinning to preferentially remove sycamore and have the areas more open and usable. When possible remove trees adjacent to houses fences to avoid complaints and future subsidence claims this removal is to be done gradually along the 10 years. Mature trees are not to be removed as long as they are healthy</p>	<p>Annually (Monitor every 5 years)  Gradually during the 10 year period</p>	<p>T&amp;L and EP  T&amp;L and EP</p>	20
<p>Post tree felling, use wood to create:</p> <ul style="list-style-type: none"> <li>- Dead hedging</li> <li>- Hibernacula</li> <li>- Hedgehog Houses</li> <li>- Bug Hotels and anything else supporting habitats</li> </ul>	<p>Throughout the year as when trees are felled</p>	<p>L&amp;L</p>	21 and 22
<p>Remove nettle, hogweed and bramble within the woodland area up to two metres in from the main woodland pathway. Introduce red campion and foxgloves by seed and replant into the soil.</p>	<p>Once a month between March and October  Collection in June/ July</p>	<p>L&amp;L  L&amp;L</p>	23
<p><b>Woodland Path</b> Cut back any overhang on the pathway as well as cutting nettles back by 0.5m from the path edges.</p>	<p>Twice per year between May and July and possibly August</p>	<p>EP and</p>	24

# Leavesden Country Park Maintenance Schedule

**Key:**

EP: Environmental Protection - T&L: Trees and Landscapes - LHHA: Leavesden Hospital History Association - HCC: Hertfordshire County Council - L&L: Leisure and Landscapes

## Leavesden Country Park - North

Details	When	Who	*Image
Natural pathway within the woodland area to be cut back.	Twice a year	EP	25 & 26
Grass on the natural path to be mown.	Once a month	EP	
Remove nettle, hogweed and bramble around the native planted trees, adjacent to the natural pathway.	Twice per year between May and July	L&L	27
<b>LCP Play Areas and Leisure Facilities Main Play area and Tee Pee play area, Outdoor Gym and Mini MUGA</b>			
Visual inspection	Weekly	EP	
Routine Inspection	Weekly		27A
Annual Inspection	Weekly	L&L	
<b>Leavesden HIVE</b>			
Yearly inspections to be completed – electrical and water etc.	Annual	Properties	
Fire alarm, carbon monoxide, emergency lighting and water testing.	Weekly	EP and L&L	27B
Deep Clean.	Annual (early Spring)	Properties	
<b>The Garden Planting:</b>			
Visual inspection (include Bug Hotel) and Water during Spring and Summer or during hot weather	Weekly Daily (during hot weather)	EP	
Clear weeds.			
Clear weeds, water	Monthly	EP	
Identify requirements for replanting – ensure drought resistant plants are used.			28 29 30
Seasonal dead heading and cutting back of plants – particularly in preparation for the winter months.			31 32
Identify requirements for replanting – ensure drought resistant plants are used.	Annual	EP	
Seasonal dead heading and cutting back of plants – particularly in preparation for the winter months.			
<b>Pergola:</b>			
Visual Inspection.	Weekly	EP	

# Leavesden Country Park Maintenance Schedule

**Key:**

EP: Environmental Protection - T&L: Trees and Landscapes - LHHA: Leavesden Hospital History Association -  
HCC: Hertfordshire County Council - L&L: Leisure and Landscapes

## Leavesden Country Park - North

Details	When	Who	*Image
<p>Perspex - clean light debris using a non-abrasive hand cloth and mild detergent – DO NOT JETWASH / DO NOT USE SPIRIT BASED CLEANERS. Check for splinters and cracks. Check all fixings.</p>	Monthly	EP	28 29 30 31 32
<p>Perspex - clean light debris using a non-abrasive hand cloth and mild detergent – DO NOT JETWASH / DO NOT USE SPIRIT BASED CLEANERS. Check all fixings are secured correctly Inspect timber for serious damage and splinters/cracks - fill any gaps with a flexible exterior sealant for timber or use timber slices Check fixing to the ground. Clean with a brush in order to prevent Verdigris – ideally this should be completed in early Spring. Oil the seating using a suitable oil finish for exterior wood.</p>	Annual	EP	
<p><b>Seating:</b> Visual Inspection.</p>	Weekly	EP	
<p>Check all fixings are secured correctly Check for splinters and cracks. Light cleaning during the grass cutting season to ensure all grass debris is removed.</p>	Monthly	EP	
<p>Deep clean of street furniture.</p>	Annual	EP	
<p><b>Surfacing:</b> Visual Inspection.</p>	Weekly	EP	
<p>Check for cracks / damage.</p>	Monthly	EP	
<p>Light cleaning of the bound aggregate – jet wash as and when necessary.</p>	Annual	EP	
<p>Bound Aggregate – lightly jet wash Hoover/brush artificial grass – check for damage. Check all fixings.</p>	Annual	EP	
<p><b>Gates and Fencing:</b> Visual Inspection.</p>	Weekly	EP	
<p>Check all fixings are secured Check self-close mechanism Check for damage.</p>	Monthly	EP	
<p>Deep clean of gates and fence.</p>	Annual	EP	

# Leavesden Country Park Maintenance Schedule

**Key:**

EP: Environmental Protection - T&L: Trees and Landscapes - LHHA: Leavesden Hospital History Association -  
HCC: Hertfordshire County Council - L&L: Leisure and Landscapes

## Leavesden Country Park - North

Details	When	Who	*Image
<p><b>COVID-19 Community Snake</b> Visual inspection. Check for loose stones. Clean and re-varnish.</p>	<p>Weekly Monthly Annual</p>	<p>EP EP EP</p>	32A
<p><b>Font Area</b> Clean font. Clean hard standing surround and steps. Light cleaning of the bound aggregate – jet wash as and when necessary.</p>	<p>Annual Annual</p>	<p>EP</p>	32A
<p>Trim natural archway on pedestrian footpath.</p>	<p>Once a month between April and September and when required during Autumn/Winter</p>	<p>EP</p>	33
<p><b>Leavesden Spirit</b> Visual inspection. Check all fixings are secure. Inspect timber for serious damage and splinters/cracks (fill any gaps with a flexible exterior sealant for timber or use timber slices). Check fixing to the ground. Clean with a brush in order to prevent Verdigris – ideally this should be completed in early Spring. Oil the sculptures using a suitable oil finish for exterior wood.</p>	<p>Weekly Monthly  Annual (early Spring)</p>	<p>EP EP  EP</p>	34
<p><b>Trick of the Light</b> Visual inspection. Steel – clean light debris using a non-abrasive hand cloth and mild detergent – DO NOT JETWASH. Mirrors - clean light debris using a non-abrasive hand cloth and mild detergent – DO NOT JETWASH. Vinyl Prints - clean light debris using a non-abrasive hand cloth and mild detergent – DO NOT JETWASH / DO NOT USE SPIRIT BASED CLEANERS. Granite – wash with a soft brush and mild detergent. Inspect all mechanisms, deep clean and polish to restore to original appearance.</p>	<p>Weekly Monthly  Annual (early Spring)</p>	<p>EP EP  EP</p>	35

# Leavesden Country Park Maintenance Schedule

**Key:**

EP: Environmental Protection - T&L: Trees and Landscapes - LHHA: Leavesden Hospital History Association -  
HCC: Hertfordshire County Council - L&L: Leisure and Landscapes

## Leavesden Country Park - South

Details	When	Who	*Image
<p><b>New Railings</b></p> <p>Pier caps and railings to be cleaned</p> <p>Area behind the railings to be kept cut to ground level.</p>	<p>Once per year</p> <p>Cut once a month between April and September</p>	EP	36
<p>Sycamore hedge to be cut to ground level</p>	<p>One per year during the winter months</p>	EP	37
<p><b>Ghosts in the Machine</b></p> <p>Visual inspection.</p> <p>Check all fixings are secure correctly</p> <p>Inspect timber for serious damage and splinters/cracks – fill any gaps with a flexible exterior sealant for timber or use timber slices.</p> <p>Check fixing to the ground.</p> <p>Clean with a brush in order to prevent Verdigris – ideally this should be completed in early Spring.</p> <p>Oil the sculptures using a suitable oil finish for exterior wood.</p>	<p>Weekly</p> <p>Monthly</p> <p>Annual (Early Spring)</p>	<p>EP</p> <p>EP</p> <p>EP</p>	38
<p>Natural / Wildflower Area</p> <ul style="list-style-type: none"> <li>- Remove nettles and introduce wildflowers to this area e.g. red campion and foxgloves.</li> <li>- Area extends along the pathway towards the Boundary artwork.</li> </ul>	<p>Autumn</p> <p>Area to be cut back once per year</p>		39
<p><b>Little Blossom Orchard</b></p> <p>Manually clear around base of the trees to remove weeds.</p> <p>Prune apples.</p> <p>Monitor, replace or remove when necessary the guards.</p> <p>Remove sap suckers/epicormic growth that grows below the formed crown.</p> <p>To sow the boundaries with mix of wildflowers but not with grass.</p>	<p>Between November and February</p> <p>Between November and February</p> <p>Autumn</p>	<p>T&amp;L</p> <p>T&amp;L</p> <p>T&amp;L</p>	40

# Leavesden Country Park Maintenance Schedule

**Key:**

EP: Environmental Protection - T&L: Trees and Landscapes - LHHA: Leavesden Hospital History Association -  
HCC: Hertfordshire County Council - L&L: Leisure and Landscapes

## Leavesden Country Park - South

Details	When	Who	*Image
<p><b>The Boundary</b></p> <p>Visual inspection.</p> <p>Clean metal base poles on the sculpture to restore original appearance. Bright Mirror Polished Stainless Steel – clean surfaces with appropriate agent (e.g. warm soapy water) – non-abrasive agent.</p> <p>Inspect all mechanisms, deep clean and polish to restore to original appearance. Paint any surfaces that need to be painted to restore to original appearance.</p>	<p>Weekly</p> <p>Monthly</p> <p>Annual (Early Spring)</p>	<p>EP</p> <p>EP</p> <p>EP</p>	41
<p><b>Edwardian Garden</b></p> <p>Grass to be cut and back up strimming around the base of all trees in this area.</p> <p>All shrub/bush growth to be cut to ground level.</p>	<p>Once a month between April and September within the entire area.</p> <p>Once a month between April and September</p>	EP	42
<p><b>Edwardian Steps</b></p> <p>Hand rails to be cleaned.</p> <p>Sweep steps.</p>	<p>Once a month</p> <p>Once a month</p>	EP	43
<p><b>Lime Trees</b></p> <p>Pollarded.</p> <p>Epicormic growth is to be cut.</p>	<p>Pollarding every 2 to 3 years depending on the growth</p> <p>Epicormic can be cut twice a year – February and October</p>	T&L	44



# Leavesden Country Park Maintenance Schedule

**Key:**

EP: Environmental Protection - T&L: Trees and Landscapes - LHHA: Leavesden Hospital History Association - HCC: Hertfordshire County Council - L&L: Leisure and Landscapes

## Leavesden Country Park - South

Details	When	Who	*Image
<b>Remembrance Garden</b>			
Visual inspection.	Weekly	EP	45
Water during Spring and Summer or during hot weather.	Weekly – April – September	EP	
Clear weeds.	Weekly – April – September	EP	
Clear weeds, water.	Monthly	EP	
Identify requirements for replanting – ensure drought resistant plants are used.			
Seasonal dead heading and cutting back of plants – particularly in preparation for the winter months.			
Trim and tidy box hedging.			
Paving: check for cracks / damage	Monthly	EP	
Light cleaning of the stone paving – if green algae is starting to appear – please jet wash at first signs.			
Paving and Bound Aggregate – lightly jet wash.	Annual (Early Spring)	EP	
Identify requirements for replanting – ensure drought resistant plants are used.	Annual (Februray/March)	EP	
Seasonal dead heading and cutting back of plants – particularly in preparation for the winter months.	Quarterly	EP	
<b>The Community</b>			
Visual inspection.	Weekly	EP	46
Clean metal on the sculpture to restore original appearance.	Monthly	EP	
Remove excess rainwater from the larger rings to ensure that they are not weighted down and can rotate.	Quarterly	EP	
Inspect all mechanisms, deep clean and polish to restore to original appearance. Paint any surfaces that need to be painted to restore to original appearance.	Annual (Early Spring)	EP	

# Leavesden Country Park Maintenance Schedule

**Key:**

EP: Environmental Protection - T&L: Trees and Landscapes - LHHA: Leavesden Hospital History Association - HCC: Hertfordshire County Council - L&L: Leisure and Landscapes

## Leavesden Country Park - South

Details	When	Who	*Image
<p><b>Every Moment Shines Sculpture</b></p> <p>Grass on this whole area to be cut to ground level.</p> <p>Visual Inspection.</p> <p>White Marble suitcase – clean debris using a hand cloth – DO NOT JETWASH.</p> <p>Steel director’s chair - clean debris using a hand cloth and mild detergent – DO NOT JETWASH.</p> <p>Paving and Bound Aggregate – lightly jet wash.</p>	<p>Once a month, between April and September</p> <p>Weekly</p> <p>Weekly</p> <p>Annual (Early Spring)</p>	<p>EP</p> <p>EP</p> <p>EP</p> <p>EP</p>	47
<p><b>Evolution Sculpture</b></p> <p>Grass in this area to be mown and strimmed, carefully up to the sculpture.</p> <p>Visual Inspection.</p> <p>Clean metal on the sculpture to restore original appearance.</p> <p>Bright Mirror Polished Stainless Steel – clean surfaces with appropriate agent (e.g. warm soapy water) – non-abrasive agent.</p> <p>Inspect all mechanisms, deep clean and polish to restore to original appearance.</p> <p>Paint any surfaces that need to be painted to restore to original appearance.</p>	<p>Once a month between April and September</p> <p>Weekly</p> <p>Monthly</p> <p>Annual (Early Spring)</p>	<p>EP</p> <p>EP</p> <p>EP</p> <p>EP</p>	48
<p>Swathe between Evolution Sculpture and main pathway to be mown.</p>	<p>Once a month between April and September</p>	<p>EP</p>	49
<p><b>Area between Every Moment Shines Sculpture and Edwardian Garden</b></p> <p>Grass to be mown to ground level.</p> <p>Area on the Eastern boundary (from the red cedar tree and natural pathway) to be kept as wildflowers – re-introduce red bartsia, buttercups and wild orchid if possible.</p> <p>Care for fruit trees, including cherries, medlar and crab apples.</p> <p>Swathe to be cut through wildflower area to the top point to link access through to the Wooden Wonder (plane) sculpture.</p> <p>Cut and lift of wildflower area to take place.</p>	<p>Once a month between April and September</p> <p>Collect seeds and sow into the area in March</p> <p>Manually clear around base of the trees to remove weeds then mulch. Clear back competing bramble growth.</p> <p>Prune as necessary to keep crowns open.</p> <p>Once a month between April and September.</p> <p>Once a year in September</p>	<p>EP</p> <p>L&amp;L</p> <p>EP</p> <p>EP</p>	50

# Leavesden Country Park Maintenance Schedule

**Key:**

EP: Environmental Protection - T&L: Trees and Landscapes - LHHA: Leavesden Hospital History Association - HCC: Hertfordshire County Council - L&L: Leisure and Landscapes

## Leavesden Country Park - South

Details	When	Who	*Image
<b>Dell area</b> Grass to be mown to ground area.	Once a month between April and September	EP	51
Swathe between Dell area and main pathway to be mown.	Once a month between April and September	EP	52
Swathe between Evolution Sculpture and main pathway to be mown.	Once a month between April and September	EP	49
<b>Hill overlooking Kiss of the Screen Gods</b> Extend wildflower area and re-introduce Yellow Rattle at the top of the hill. Extend wildflower "island" on the hill through cut, lift, harrow, seed and rolled. 1.5m width swathe to be mown on the north and south boundary of the hill.	Collect seeds and sow into the area in March  Once a month, between April and September	L&L  EP	53
<b>Kiss of the Screen Gods</b> Left as wildflower with no swathe cut through. Collection of wildflowers, including Yellow Rattle and a Bee Orchid. Cut and lift of wildflower area to take place. Visual Inspection. Light cleaning of the stone work – if green algae is starting to appear – please jet wash at first signs. Stone - jet wash to clean. Acrylic Faces - clean light debris using a mild detergent – DO NOT JETWASH.	Once a year in September (excluding Year 2 – 2022) Weekly Monthly  Annual (Early Spring)	EP EP EP  EP	54

# Leavesden Country Park Maintenance Schedule

**Key:**

EP: Environmental Protection - T&L: Trees and Landscapes - LHHA: Leavesden Hospital History Association - HCC: Hertfordshire County Council - L&L: Leisure and Landscapes

## Leavesden Country Park - South

Details	When	Who	*Image
<p><b>The Wooden Wonder</b></p> <p>Visual Inspection and check for any pooled water – ensure drainage holes are clear allowing water to drain.</p> <p>Clean solar panels.</p> <p>Wipe over control panel with a soft cloth.</p> <p>Check all fixings are secure correctly.</p> <p>Inspect timber for serious damage and splinters/cracks – fill any gaps with a flexible exterior sealant for timber or use timber slices.</p> <p>Check fixing to the ground.</p> <p>Clean with a brush in order to prevent Verdigris – ideally this should be completed in early Spring.</p> <p>Oil the sculptures using a suitable oil finish for exterior wood.</p>	<p>Weekly</p> <p>Weekly</p> <p>Annual (Early Spring)</p>	<p>EP</p> <p>EP</p> <p>EP</p>	<p>55</p>
<p><b>South Side Entrance (Langley Lane)</b></p> <p>Gorse Hedge and Native hedge to be weeded twice a year and bramble removed.</p> <p>Cut gorse hedge and native hedge to the same height as the wooden fence.</p> <p>Once established, remove guards and weeding no longer required.</p>	<p>Once a month between between October and November</p> <p>Once per year – between October and November</p>	<p>EP</p>	<p>56</p>

# Leavesden Country Park Maintenance Schedule

**Key:**

EP: Environmental Protection - T&L: Trees and Landscapes - LHHA: Leavesden Hospital History Association -  
HCC: Hertfordshire County Council - L&L: Leisure and Landscapes

## Leavesden Country Park – Horses’ Field

Details	When	Who	*Image
<b>Langley Lane Play Areas</b>			
Visual inspection.	Weekly	EP	25A
Routine Inspection.	Monthly		
Annual Inspection.	Annual	L&L	
Gorse hedge planted along Langley Lane to be weeded twice a year.	May and September	EP	57
Gorse hedge and native hedge planted along South Way to be weeded twice a year. Once established, remove guards and weeding no longer required.	May and September	EP	
<b>Horses’ Fields</b>			
Mow paths through the field.	Once a month between April and September	EP	58

## Site Wide works

All lampposts and directional signage to be painted.	Every two years 2021 / 2023 / 2025 / 2027 / 2029	EP	59
Hand carved benches and totem pole to be sanded and painted with decking oil. There are 5 benches/picnic benches and 1 totem pole within the park.	Every two years 2021 / 2023 / 2025 / 2027 / 2029	EP	60
<b>Oak Cube Seating</b>			
Visual Inspection.	Weekly	EP	61
Check all fixings are secured correctly Check for splinters and cracks..	Monthly	EP	
Light cleaning during the grass cutting season to ensure all grass debris is removed.			
Check all fixings are secured correctly Inspect timber for serious damage and splinters/cracks – fill any gaps with a flexible exterior sealant for timber or use timber slices.	Annual (Early Spring)	EP	
Check fixing to the ground.			
Clean with a brush in order to prevent Verdigris – ideally this should be completed in early Spring. Oil the seating using a suitable oil finish for exterior wood.			

# Leavesden Country Park Maintenance Schedule

**Key:**

EP: Environmental Protection - T&L: Trees and Landscapes - LHHA: Leavesden Hospital History Association - HCC: Hertfordshire County Council - L&L: Leisure and Landscapes

## Site Wide works

Details	When	Who	*Image
<p><b>Street Furniture</b></p> <p>Visual Inspection.</p> <p>Check all fixings are secured correctly</p> <p>Check for splinters and cracks.</p> <p>Light cleaning during the grass cutting season to ensure all grass debris is removed.</p> <p>Deep clean of street furniture.</p>	<p>Weekly</p> <p>Monthly</p> <p>Annual (Early Spring)</p>	<p>EP</p> <p>EP</p> <p>EP</p>	<p>62</p>
<p>Perimeter of the park to be kept natural for wildlife and habitats.</p>	<p>Ongoing throughout the year</p>	<p>All</p>	<p>63</p>
<p>0.5m perimeter of long grass to be kept around all trees.</p>	<p>Each cut</p>	<p>EP</p>	<p>64</p>
<p><b>All interpretation Boards:</b></p> <p>9 with each sculpture, 1 Grassland, 1 Woodland, East Lane Cemetery, Edwardian Garden, Little Blossom Orchard.</p> <p>Visual Inspection.</p> <p>Check all fixings are secured correctly.</p> <p>Light clean of entire board – attention should be given during the grass cutting season to ensure all grass debris are removed.</p> <p>Steel – clean light debris using a non-abrasive hand cloth and mild detergent – DO NOT JETWASH.</p> <p>Vinyl Prints - clean light debris using a non-abrasive hand cloth and mild detergent – DO NOT JETWASH / DO NOT USE SPIRIT BASED CLEANERS.</p>	<p>Weekly</p> <p>Monthly</p> <p>Annual (Early Spring)</p>	<p>EP</p> <p>EP</p> <p>EP</p>	<p>65</p>

# Leavesden Country Park Maintenance Schedule

**Key:**

EP: Environmental Protection - T&L: Trees and Landscapes - LHHA: Leavesden Hospital History Association -  
HCC: Hertfordshire County Council - L&L: Leisure and Landscapes

## Site Wide works

Details	When	Who	*Image
<p><b>Parkland Trees</b></p> <p>Check trees and take action when necessary for dead wood and broken or damaged branches/trees.</p> <p>Watering recently planted trees</p> <p>Epicormic growth to be cut.</p>	<p>Every 2/3 years</p> <p>Between April and September</p> <p>Epicormic can be cut twice a year – February and October</p>	L&L	66
<p><b>Maps and Welcome Signs</b></p> <p>Visual Inspection.</p> <p>Check all fixings are secured correctly.</p> <p>Light clean of entire board – attention should be given during the grass cutting season to ensure all grass debris are removed.</p> <p>Steel – clean light debris using a non-abrasive hand cloth and mild detergent – DO NOT JETWASH.</p> <p>Vinyl Prints - clean light debris using a non-abrasive hand cloth and mild detergent – DO NOT JETWASH / DO NOT USE SPIRIT BASED CLEANERS.</p>	<p>Weekly</p> <p>Monthly</p> <p>Annual (Early Spring)</p>	<p>EP</p> <p>EP</p> <p>EP</p>	67

## Appendices C

The following table highlights the key capital items and works to trees across the site over the next ten year period for Leavesden Country Park. Currently there are no funds allocated to these projects, so would need to follow the Council's capital bid process as well as securing external funding. All costs are estimates and full costs will need to be identified for each item prior to the submission of a Capital Bid or External Funding Application.

### Key:

EP: Environmental Protection - L&L: Leisure and Landscapes

No.	Details	Estimated Cost	When	Who
1	Replace red dog bins with green dog bins and ensure bins are placed in locations away from direct sunlight.	£15,000	Year 1 (2021)	EP and L&L
2	Replace old bins with new bins in a consistent style.	£25,000	Year 1 (2021)	EP and L&L
3	Replace existing directional signage across the park.	£8,500	Year 1 (2021)	EP and L&L
4	New directional sign needed for: football pitch, Heritage Orchard and East Lane Cemetery.	Included in above estimate	Year 1 (2021)	L&L
5	Add directional signage to East Lane Cemetery	Included in above estimate	Year 1 (2021)	EP and L&L
6	<b>Compost Area</b> Remove hardstanding and create two locations for compost piles.	£15,000	Year 1 (2021)	EP and L&L
7	Interpretation and signage at the Horses' Field.	£8,000	Year 1 (2021)	L&L
8	Plant small sized trees in the boundary with Mallard Road and Nightingale close.	£600	Year 1 (Mar –Jun)	EP and L&L
9	Apply mulching at the base of recently planted trees.	£200	Year 1 (Jan-Mar)	L&L
10	Crown lift of trees along car parks and designated walking areas.	£4,500 / Year	Year 1 &2 (Nov-Mar)	L&L
11	Plant 3 trees in the Edwardian garden to replace the ones that have been stolen/damaged or died.	£850	Year 1 to 10 (Sep-Feb))	L&L
12	Apply mulching at the base of recently planted trees.	£600 / year	Year 1 (2021)	
13	Replace pathways within the north of the park.	£100,000	Year 2 (2022)	L&L and Properties
14	Survey the main car park and make necessary improvements.	£250,000	Year 2 (2022)	L&L and Properties
15	Replace the outdoor gym.	£27,000	Year 2 (2022)	L&L
16	Maintenance of boundary trees and shrubs to avoid overhanging vegetation into neighbourss of Leavesden Country Park.	£5,000	Year 2 (Jan-March)	L&L



## Appendices C

The following table highlights the key capital items and works to trees across the site over the next ten year period for Leavesden Country Park. Currently there are no funds allocated to these projects, so would need to follow the Council's capital bid process as well as securing external funding. All costs are estimates and full costs will need to be identified for each item prior to the submission of a Capital Bid or External Funding Application.

<b>Key:</b>				
EP: Environmental Protection - L&L: Leisure and Landscapes				
No.	Details	Estimated Cost	When	Who
17	Plant a new boundary line of 25 trees along the Horse chestnut Avenue (boundary with Warren court).	£3,500 / Year	Year 2 &3 (October- Feb)	L&L & EP
18	Replace pathways within the south of the park.	£200,000	Year 3 (2023)	L&L and Properties
19	Investigate the feasibility of a pond with a dipping platform in the north of the park. - Identify a location - Costs - Resources required - Ongoing maintenance	£0 Cost to be identified following feasibility study	Year 3 (2023)	L&L
20	Widen the main entrance.	£90,000	Year 3 (2023)	L&L and Properties
21	Provide brown tourism signs directing people to the park.	£10,000	Year 3 (2023)	L&L
22	Formative pruning to young trees planted in the Horses' Field Play Area.	£1,000	Year 3 (2023)	L&L
23	Install 100 tree ID plaques at the most iconic trees along the park.	£5,000	Year 3 (2023)	L&L
24	Review the need of replace or removal of tutors and water bag is applicable. trees in the boundary with Mallard Road and Nightingale close.	£250	Year 3 (August – Mar)	L&L & EP
25	Evaluate the development of the 25 trees planted in year 2 and check if any need to be repalced.	£1,500	Year 3 & 4 (October-Feb)	L&L
26	Review and update lighting across the site.	£30,000 (replacement of heads to LED) £60,00 (includes the posts)	Year 4 (2024)	L&L and Properties
27	Replace natural play space in the north of the park.	£50,000	Year 4 (2024)	L&L
28	Formative pruning for trees planted in the Edwardian Garden.	£250	Year 4 (Nov-Feb)	L&L & EP

## Appendices C

The following table highlights the key capital items and works to trees across the site over the next ten year period for Leavesden Country Park. Currently there are no funds allocated to these projects, so would need to follow the Council's capital bid process as well as securing external funding. All costs are estimates and full costs will need to be identified for each item prior to the submission of a Capital Bid or External Funding Application.

<b>Key:</b>				
EP: Environmental Protection - L&L: Leisure and Landscapes				
No.	Details	Estimated Cost	When	Who
29	Decorate Leavesden HIVE and update any ICT equipment.	£2,000 - decoration £5,000 – ICT equipment	Year 5 (2025)	L&L and Properties
30	Paint and update the Pavilion.	£2,500	Year 5 (2025)	Properties
31	Review the need of replace or removal of tutors (wooden stake and ties) and water bag if applicable. 2 years after trees been planted.	£1,250	Year 5 (2025)	L&L & EP
32	Review the need of replace or removal of tutors (wooden stake and ties) and water bag if applicable. 2 years after trees been planted. (Edwardian Garden and Horse Chestnut avenue).	£200	Year 5, 6, 7 (Nov-Mar) 15 trees/year	L&L & EP
33	Review and enhance the existing Heritage Trail and replace interpretation board vinyls if necessary .	£10,000	Year 6 (2026)	L&L
34	Review and replace Heritage Trail interpretation boards.	£19,000	Year 6 (2026)	L&L
35	Review and replace any street furniture that is at the end of life.	£2,500 - £20,000	Year 7 (2027)	L&L and EP
36	Replace any dead trees, along all areas, from previous planting years.	£2,000	Year 7 (2027)	L&L & EP
37	Plant a new line of limes (or other preferred small sized tress (Judas tree for example) in the gaps between the lime trees at the Lime avenue and the verge of the amenity grass in front of the Edwardian Garden.	£5,000 / Year	Year 7, 8, 9	L&L and EP
38	Review the need of replace or removal of tutors (wooden stake and ties) and water bag if applicable.	£500 / Year	Year 7, 8, 9 (Nov- Mar)	L&L and EP
39	Plant 3 trees in the amenity green areas every year.	£1,500	Year 7, 8, 9 (Mar – Oct)	L&L and EP
40	Review and enhance The Garden.	£30,000	Year 8 (2028)	L&L

## Appendices C

The following table highlights the key capital items and works to trees across the site over the next ten year period for Leavesden Country Park. Currently there are no funds allocated to these projects, so would need to follow the Council's capital bid process as well as securing external funding. All costs are estimates and full costs will need to be identified for each item prior to the submission of a Capital Bid or External Funding Application.

**Key:**

EP: Environmental Protection - L&L: Leisure and Landscapes

No.	Details	Estimated Cost	When	Who
41	Review and update play area.	£100,000	Year 9 (2029)	L&L
42	Review and update the external façade of the HIVE building.	£50,000	Year 9 (2029)	L&L and Properties
43	Replace sculptures in the Heritage Trail where necessary.	£200,000	Year 10 (2030)	L&L
44	Update site wide interpretation boards.	£11,000	Year 10 (2030)	L&L
45	Install ID tree plaques in the recently planted trees.	£3,000	Year 10 (2030)	L&L and EP

## Policies and Strategies that relate to the Country Park

The following details are to be read in conjunction with the Leavesden Country Park Management Plan and all its Appendices to provide additional background information.

### **Council plans, policies and strategies**

In common with other local councils, we produce a number of statutory and non-statutory plans and strategies, some of which are produced jointly with our partner organisations.

Listed below are the policies and strategies that relate directly as a whole or in part, to the management of Leavesden Country Park. Details of each document can be found or downloaded here: <https://www.threerivers.gov.uk/egcl-page/council-policies-and-plans>

### **Anti-Social Behaviour**

Three Rivers District Council has an Anti-Social Behaviour Policy which sets out what types of anti-social behaviour (ASB) the Council can deal with and what response somebody can expect from Three Rivers District Council when making a report to us

### **Climate Change and Sustainability Report**

Through the new Climate Change and Sustainability Strategy the Council will aim to engage the community to work together to create healthier lifestyles, enhance biodiversity and grow economies. The Strategy will reduce carbon emissions through regular measurement, explore further decentralised energy projects for the Council and aim to inspire local businesses to do the same.

### **Community Safety Strategy**

Three Rivers Community Safety Partnership works together to prevent and reduce crime and disorder.

### **Community Strategy**

Three Rivers Community Strategy 2018-2023: This Strategy has been developed by members of the Local Strategic Partnership in Three Rivers. It sets out how we are working together to improve the quality of life of people who live and work in the Three Rivers District.

### **Green Travel Plan**

This Green Travel Plan sets actions to improve the green travel options available to TRDC staff and Members and to the Council's customers and visitors. The key aim of the plan is to help make a contribution towards the reduction of pollution and greenhouse gas emissions which currently lead towards global warming.

### **Physical Activity Strategy 2018-21**

Increasing the physical activity levels of the residents of Three Rivers is a strategic priority of the Council contributing to the health and wellbeing of the local population, and demands on public resources.

### **Safeguarding Children, Young People and Adults at Risk Policy**

Three Rivers District Council takes seriously the issue of safeguarding children, young people and adults at risk. Within the course of providing our services, or contacting local residents, we have the opportunity to make positive impacts in improving children's lives and protecting them, and adults at risk from injury and abuse. The safeguarding policy lays out the Council's commitments to work collaboratively to safeguard children, young people and adults at risk.

### **Strategic Plan**

Each year, Three Rivers District Council updates its Strategic Plan. This is a document that brings together our high level, medium- to long-term objectives which, following consultation and analysis of data, the Council considers to be its priorities for the District.

It focuses on those areas where the Council has a lead role or can play a key part in delivering or influencing the outcomes. Its purpose is to guide the Council in its annual consultation, planning, resource allocation and performance management process by articulating clearly a series of SMART targets (targets that are Specific, Measurable, Achievable, Resourced and Time-limited) by which we shall be able to track our progress towards delivering our long-term objectives.

### **Woodland Management Plans – including tree strategy**

Three Rivers District Council owns over 240 hectares of woodland from large Local Nature Reserve sites such as Oxhey Woods to small pockets of woodland adjacent to residential areas. The Council currently manages these sites for wildlife, public access and recreation.

### **Value for Money Strategy**

The Strategic Plan states that "the Council seeks continuous improvement and value for money". By 'Value for Money' the Council means the optimum balance between economy, efficiency and effectiveness.

## Appendices E

# Licences and Tenants within the Country Park

The following details are to be read in conjunction with the Leavesden Country Park Management Plan and all its Appendices to provide additional background information.

Below are a list of the current licences and tenants within the country park.

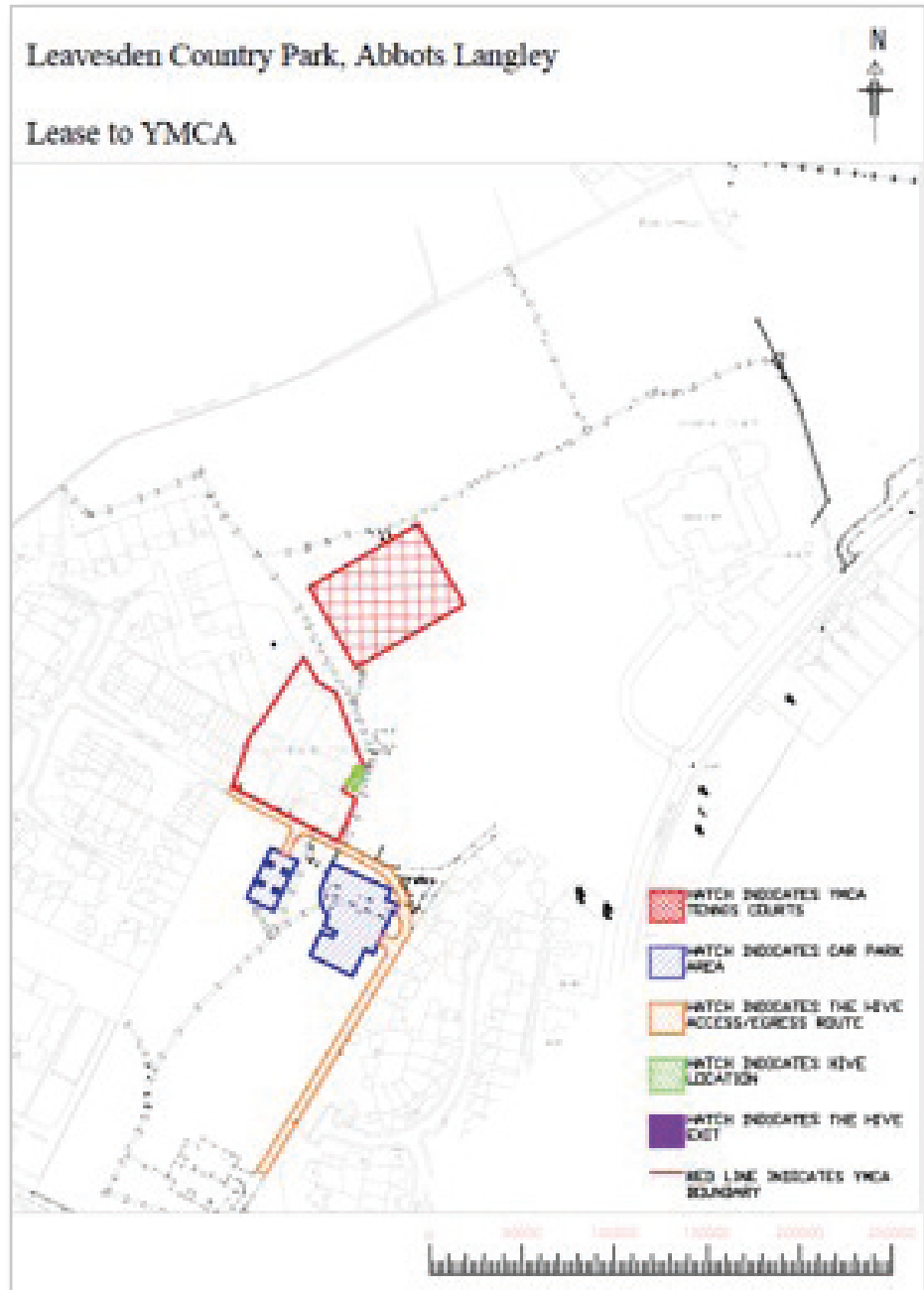
### Licences

Currently the licences that apply to the Country Park at the Public Space Protection Orders (PSPO), which can be viewed on the Council website along with the relevant Byelaws.

Should any temporary licences be required for music or food service etc, this are granted on a temporary basis that is event by event using the hire of grounds process.

### Tenants

The only tenants at Leavesden Country Park, are noted as YMCA who lease and manage the area known as 'Woodlands' this comprises of the areas noted in the map below and management of the businesses within YMCA Woodlands main building, Woodlands Café and Leavesden Cycle Hub along with the sports facilities shown opposite.



# Health and Safety: building maintenance schedule & relevant risk assessments

Health and Safety & Maintenance Schedule Checklist				
Weekly	Monthly	Quarterly	6 Monthly	Annually
Fire Alarm – Park Ranger	Fire Extinguisher Visual Check – Park Ranger	Heat Pump - Property Services /Contractors	First Aid Kit - Park Ranger	Water Heater - Property Services /Contractors
Emergency Lighting Charging Check – Park Ranger	Emergency Lighting Operation Check – Park Ranger		Intruder Alarm - Property Services /Contractors	Expansion Vessel - Property Services / Contractors
Cleaning has taken place – Park Ranger	Cold Water Check - Property Services / Contractors		Fire Alarm - Property Services /Contractors	Emergency Light 3 Hour Discharge Test - Property Services / Contractors
	Water Temperature Check - Property Services / Contractors		All H & S Signage - Park Ranger	Fire Extinguisher Check Property Services / Contractors -
			TMC Valve - Property Services /Contractors	

**Health and Safety Testing**

Within the red folder in the HIVE, is a sheet to record these tests have taken place.

**Fire Alarm:** This should be tested on a weekly basis:

*There a videos on YouTube to assist with this, use the names below to find them. The keys are located on top of the panel.*

**Panel: C-TEC – RED key**

**Sounder: APOLLO – WHITE key**

- 1 Make sure you have both the red and the white key.
- 2 Insert the red key into the panel and turn 90 degrees. This enables access to the panel buttons, it will light up and make a noise.
- 3 Firmly push the centre of the white box of the APOLLO sounder unit. It will go inwards and rotate. This will cause the fire alarm and the intruder alarm to sound.

- 4 Line up and insert the white key to the bottom of the sounder unit, turn the key. This should realign the white panel of the sounder back to its original straight position.
- 5 On the panel, press the “silence/r esound sounders.”
- 6 Press “Control Panel Reset.”
- 7 The fire alarm will then be silenced. Turn the key to the “0” position.
- 8 The intruder alarm will still be sounding. To deactivate type the code into each panel and press “No.”

**Fire Extinguisher:** This should be checked monthly

Each month check the fire alarm is in the correct place and hasn't been tampered with: i.e. the seals are in place.

**Emergency Lighting**

**Weekly Test:** Look at each of the emergency lighting units, each should

have an additional small green light. Check this is on. This means that the emergency lighting unit is charging.

**Monthly Test:** You will need the “fish key” (again on top of the fire alarm panel). Turn all lights off. Place the fish key into the slot next to the light switches. Rock the fish key to the top and bottom of the slot, this should turn on and off the emergency lighting.

**Water Temperature:** this should be tested on a monthly basis by contractors.

Hold the thermometer under the tap for 2-3 minutes and see the resulting temperature.

See the attached water temperature document.

**First Aid Kit**

Every six months (or more often) check the contents of the first aid kit: in date, and all present.

**Health and Safety Checklist**

Please enter the date that the check took place. When complete, please file in folder for M& E yearly inspection.

**Weekly checks**

Fire Alarm Tested	Emergency Lighting Charging Check	Cleaning has taken place

**Monthly checks**

Fire Extinguisher Visual Check	Emergency Lighting Operation Check	Cold Water Check Carried Out

**6 Monthly checks**

First Aid Kit	Intruder Alarm	All H & S Signage

Please ensure that if you find a fault with anything on this list, you must record the details in the boxes below as well as reporting it to the TRDC Leisure Development team (01923 776611) immediately.

<b>Any issues recorded:</b>	<b>Action taken:</b>

<b>Signature of Park Ranger:</b>	<b>Printed Name of Park Ranger:</b>

**SITE CHECK FORM**

<b>Name of Site:</b> Leavesden HIVE	<b>Date of session/activity:</b>
<b>Form completed by:</b>	<b>Time of session/activity:</b>

It is the **session leader/hirer's responsibility** to ensure a check is carried out at the start and end of every session. Please sign and complete the **time** that the check was completed at the end of the form.

	Start	End
<b>Fire Equipment:</b>		
Clear & unobstructed		
Clearly/correctly labelled		
In correct position		
Within expiry date??		
<b>Kitchenette:</b>		
Clean and usable		
Electrical equipment PAT test (yearly expiry date)		
<b>Interior of building:</b>		
Lighting adequate & working		
Litter picked up		
Bins available		
Electricity – plug sockets off, no wires exposed		
Windows / doors / glass		
<b>Exterior of building:</b>		
Litter picked up		
Fences to a suitable standard		
Windows / doors / glass		
<b>Equipment:</b>		
In working order		
Clean and usable		
Electrical equipment PAT test (expiry date of 2yrs)		
<b>First Aid Kits:</b>		
In correct location		
Fully equipped		
Accident / Incident forms available		
Head Injury Advice form available		
<b>Other:</b>		
Risk Assessment completed, signed by session leader/hirer		

Please ensure that if you find a fault with anything on this list either at the beginning or the end of a session, you must record the details in the boxes below as well as reporting it to both the facility manager and the TRDC Leisure Development team (01923 776611) immediately.

<b>Any issues recorded:</b>	<b>Action taken:</b>

<b>Signature of session leader/hirer:</b>	<b>Start</b>	<b>End</b>
<b>Printed Name of session leader/hirer:</b>		



# Leavesden H I V E

## Emergency Evacuation Procedure

**Site address:** Leavesden HIVE, Leavesden Country Park, off College Road, Abbots Langley, WD5 0NX

**Emergency Assembly Point:** the top car park opposite Leavesden Cycle Hub

**Do not put yourself or anyone else in danger, if in doubt- get out!**

The following procedures are to be observed in the event of a need to evacuate Leavesden HIVE.

The Fire Alarm will be activated to signal an emergency evacuation: this could be for a fire, a bomb alert or a practice drill.

Staff and hirers, are responsible for their own evacuation and that of their visitors, temporary staff and contractors.

Staff and hirers must ensure that they are made aware of these emergency evacuation procedures.

### Instructions for the session leader operating within Leavesden HIVE

#### **If you discover a Fire or other emergency situation:**

- ✧ Raise the alarm by operating the nearest fire alarm. Press the white panel with force
- ✧ Phone the fire brigade (999)
- ✧ Evacuate the building immediately and move all people to the fire evacuation point, closing all doors behind you if possible
- ✧ DO NOT re-enter Leavesden HIVE until the emergency services have arrived and declared the building safe to enter

#### **If the fire alarm sounds:**

- ✧ Evacuate the building immediately via the nearest exit. Do not collect any belongings
- ✧ Move to the assembly point and report to the fire warden for further instruction
- ✧ DO NOT re-enter Leavesden HIVE until the emergency services have arrived and declared the building safe to enter

### Instructions for the fire warden operating within Leavesden HIVE

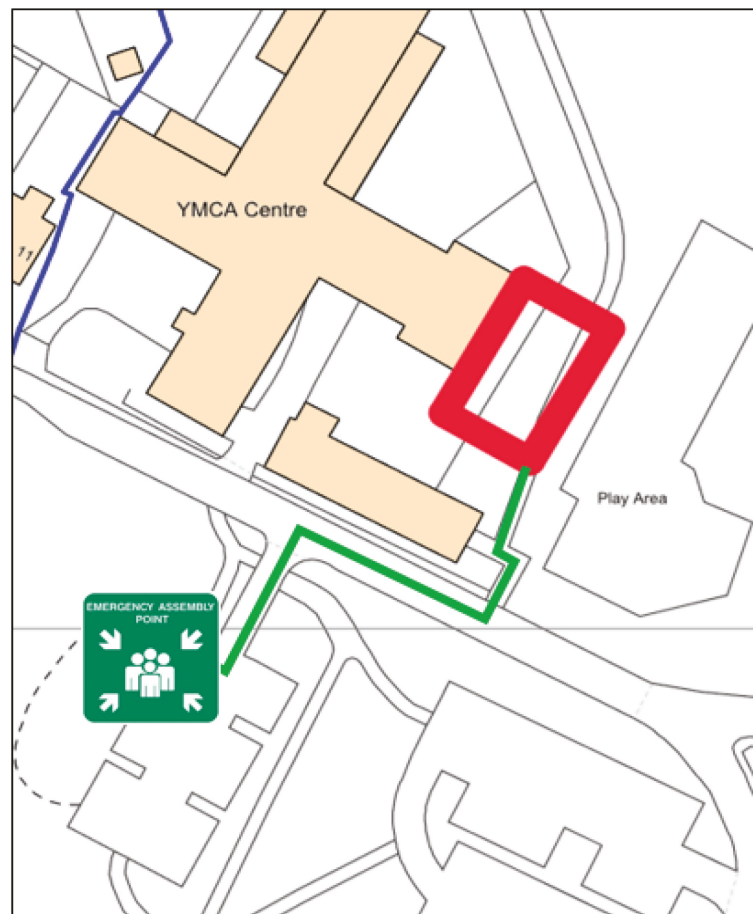
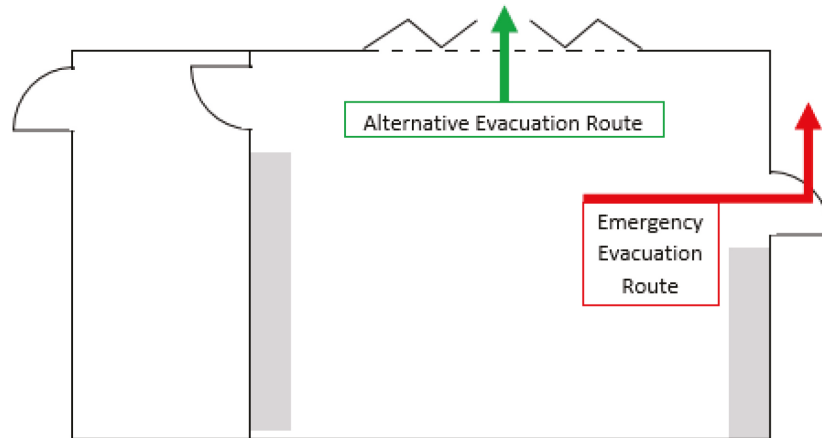
#### **If you discover a Fire or other emergency situation:**

- ✧ Ensure all staff have heard the fire alarm and are aware of the risk
- ✧ Assuming you have been trained to do so and feel competent use the fire equipment to fight the fire using the fire extinguishers
- ✧ Contact the fire brigade as soon as possible
- ✧ Assist with the evacuation of all users as quickly as possible and ensure people move to the fire assembly point
- ✧ Alert the Woodlands YMCA premises by triggering the fire alarm, ensure the Woodlands Café and Leavesden Cycle Hub are alerted also
- ✧ Collect any registers (if applicable) and a first aid kit. Complete the register as soon as possible once at the fire assembly point
- ✧ Do not allow anyone to re-enter the building until the emergency services have arrived and declared the building safe to enter

#### **If the fire alarm sounds:**

- ✧ Evacuate the building immediately via the nearest exit. Do not collect any belongings
- ✧ Direct everyone to the assembly point
- ✧ Investigate if the issue is a false alarm or if there is a fire present
- ✧ If a fire is present follow the above procedure and phone 999

**Emergency Evacuation routes exiting Leavesden HIVE to the  
Emergency assembly point**



<b>RISK ASSESSMENT FOR:</b> Leavesden HIVE for staff, activity providers and hirers		<b>ESTABLISHMENT:</b> Three Rivers District Council – Leavesden HIVE, Leavesden Country Park, Leavesden, WD5 0GU	
<b>Assessment by:</b> Lisa Cook	<b>Date:</b> 10/11/2020	<b>Manager Approval:</b> Charlotte Gomes	<b>Date:</b> 10/11/2020

This form records the significant findings of a risk assessment and details any action required to reduce risk further, where existing actions (control measures) are insufficient.

What are the hazards?	Who might be harmed and how?	What are you already doing?	What further action is necessary?	Action by who?	Action by when?	Done
Plug Sockets	Staff/Activity Provider/Hirer / Participants Electric Shock Fire	Plug sockets are only used by Staff/Activity Provider/Hirer. All sockets are tested and comply with health and safety guidelines.	Electrical Equipment to be PAT tested by Three Rivers District Council.	Three Rivers District Council Facilities	yearly	yes
Fire	Staff/Activity Provider/Hirer / Participants Burning Suffocation Death	Staff/Activity Provider/Hirer to advise procedure for fire evacuation at the beginning of session. All to assemble in the car park. Staff/Activity Provider/Hirer to take register/signing in sheet, then call emergency services (this can be delegated to TRDC staff) and alert emergency services if someone is missing. Details of address are above. Fire doors are kept closed and emergency exits are kept clear.	n/a			
Shelves/ Cupboard	Staff/Activity Provider/Hirer / Participants Falling Objects/ books could cause injury.	Ensure room set up is away from cupboards / shelving units.	n/a	L&L		

What are the hazards?	Who might be harmed and how?	What are you already doing?	What further action is necessary?	Action by who?	Action by when?	Done
Chairs/ Tables	Staff/Activity Provider/Hirer / Participants Trips and Falls	Staff/Activity Provider/Hirer to check all furniture before the start of the session and include findings on Site Check Form.  Chairs to be stacked at a suitable height and at the side of the room.	n/a			
Flooring	Staff/Activity Provider/Hirer / Participants Trips and Falls	Staff/Activity Provider/Hirer to perform a routine site check of the Leavesden HIVE prior to the start of ALL sessions and record findings on the Site Check form.  Clear up any hazardous items on the floor immediately.	n/a			
Tea and Coffee Making area	Staff/Activity Provider/Hirer / Participants Scolding area	Staff/Activity Provider/Hirer to supervise any hot water use.				
Equipment	Staff/Activity Provider/Hirer / Participants Damage / Cost Implications	All equipment for the session/ activity to be brought by Staff/Activity Provider/Hirer and tidied away/taken away at the end of the session.  Staff/Activity Provider/Hirer are not to use any other equipment for sessions/ activities.	n/a			
Manual Handling	Staff/Activity Provider/Hirer / Participants Strains / injury	Staff/Activity Provider/Hirer to take care when moving furniture and always follow manual handling procedures.				

Assessment review date:  
[November 2021]

**Assessment: Low risk**

Risk level:	Level of precautions:
Trivial / Tolerable (low risk)	No or minimal precautions likely to be required.
Moderate risk (medium risk)	Precautions required to reduce the risk; if precautions are not possible or of limited effect, you should consider the risk versus the benefit of proceeding.
Substantial/intolerable risks (high risk)	The activity must not proceed without precautions to remove or reduce the risk.

## National Lottery Heritage Fund Activity Plan and Conservation Plan

The following details are to be read in conjunction with the Leavesden Country Park Management Plan and all its Appendices to provide additional background information.

A full evaluation of the delivery of the Activity Plan, Conservation Plan and Capital Works, will be carried out in Winter 2021, led by independent, external specialists. The final evaluation report will be produced based on all the evidence collected at the end of the project, assessing the National Lottery Heritage Fund outcomes and project aims to judge the progress made. The report will serve as a milestone document for further planning, as well as on the progress of the project.

This evaluation report, will form the bedrock of the achievements for delivery against the National Lottery Heritage Fund project and prove to be a document to help develop and deliver future programmes. As part of the evaluation process for National Lottery Heritage

Fund, a map will be produced to show the full outcomes around the park.

### Activity Plan

The Activity Plan is a guidance document for the project team and others involved in the process. It is necessary in order to present all the elements of a National Lottery Heritage Fund project which are not related to capital works. Its focus is on how the National Lottery Heritage Fund outcomes for the project can be met through engaging people and communities for the mutual benefit of themselves and the project.

For audience identification, the results of all consultation work are summarised and analysed in the Activity Plan so that the future audiences and activities can then be outlined and formulated into the Action Plan which is a formatted schedule of activities, costs and impacts.

### Objectives of the Conservation Management Plan

In terms of programming, the plan informs the team of the detail of

activity programming covering events and activities, volunteering, training, interpretation and promotion. It also includes detail on the costs per activity and how the activities will impact on beneficiaries and support the National Lottery Heritage Fund outcomes.

The majority of these activities use the Leavesden HIVE as a hub for starting, ending or indeed delivering the activities.

A detailed action plan is set out covering all aspects of the Activity Plan with respect to audience development, volunteer participation, training and learning. We have considered the number of events and activities that will be run and the level of participation and set out the full detail. . These outputs are summarised in the tables below.

Below is a summary of the number of events and participants calculated for the plan:

	2018-19 No. of events	2019-20 No. of events	2020-21 No. of events	2021-22 No. of events	
Evaluation	0	2	1	2	5
Interpretation	2	8	0	0	10
Marketing & Promotion	1	4	4	4	13
Volunteering	0	8	7	6	21
Heritage Trail	0	7	3	3	13
Event	0	18	18	18	54
Activity	0	28	25	24	77
Education	0	20	30	40	90
Community Archaeology	0	5	2	0	7
Event (medium)	0	1	7	6	14
Oral History Project	0	5	1	0	6
Training for Volunteers	0	3	2	2	7
Training for Staff	0	1	1	1	3
<b>Total</b>	<b>3</b>	<b>110</b>	<b>101</b>	<b>106</b>	<b>320</b>

## Summary of audiences

Below are extracts from the full Activity plan, for reference:

### 7 Target Audiences & Future Audiences

Comparing current and potential audiences from the research outlined earlier, we can summarise the target audiences as:

#### 7.1 Education Sector

Covering all types of educational organisations including schools, special schools, nurseries, colleges and universities.

#### 7.2 Families

Within the catchment area there are high numbers of Dormitory Dependables (older families with children under 18 & older singles and mature families with children under 18; Commuterland Culturebuffs (older families) and Trips and Treats (younger and older families).

This suggests that a key group to engage is families. However,

due to the scale of new house building in the area, this audience is split into two categories, covering both 'established families' who have been living in the area for some time as well as 'new families' who are those representing new communities.

#### 7.3 People with a disability

This includes people who may have a link to the site from its previous history, as well as new audiences within this category who would benefit from engagement in a green space or would be interested in taking part in an activity or volunteer programme.

#### 7.4 People with a mental health need

This covers visitors who could have memories of having attended the Leavesden Hospitals and therefore have a link to the country park already.

#### 7.5 Older Visitors

This includes the proportion of audiences in the catchment area which fall into the Homes and Heritage category of Audience Finder (older people living in rural areas). As is shown from the previous section, they are represented in significant numbers in the area.

#### 7.6 Special interest

This covers two groups closely associated with the site's past, under the theme Hospitals: those who worked, trained or attended any of the former hospitals on site and Aerodrome: people who worked at Leavesden Aerodrome or Rolls Royce.

### 8 Audience Engagement

Based on our analysis set out above and supported by consultation, we propose the following: Table Audience engagement

Target Audience	Rationale	Why this audience is important	How we will engage this audience	Barriers for this audience and how resolved
Education Sector	The schools survey shows that there is potential for more school visits and work already done with special schools indicates the same. The benefits of engagement with the country park is also key in assisting schools in preventing ill health of children. Taking this opportunity to work with schools to reduce the barriers they experience will also assist in enabling more of them to engage.	If school children engage more with the park it will have an ongoing impact toward increasing the value of the park within the local community, as the children will feel more ownership of the space and may go on to encourage parents and siblings to visit as well. Increasing their understanding of this valuable natural asset in their community will also assist with ensuring the country park is valued in future.	Through organised activities led by the park ranger and designed to include key elements of the curriculum relevant to the classes visiting. We will develop and produce an education pack specifically for this purpose.	Access to information about what the park offers, resolved by targeted development of an Education Programme. Provision of the Heritage Wildlife Centre to support activity.

## Appendices G Essential Reading

# National Lottery Heritage Fund Activity Plan and Conservation Plan

Target Audience	Rationale	Why this audience is important	How we will engage this audience	Barriers for this audience and how resolved
Families	The Audience Finder tool has identified a key audience to engage in this area as being families of different types. We hope to also use this opportunity for children and young people to be brought into more contact with local wildlife, engage in more exercise.	Attracting this audience will help to spread the word to other families and neighbours to begin to make the country park more appealing as a place to visit for local people. In addition to this, we hope that the engagement of families will limit the further development of antisocial behaviour in the country park in future years.	Family activities and events as well as family friendly volunteering will be organised to attract these groups. Furthermore, we will ensure that marketing is targeted specifically to engage the new communities who may be less aware of what is on offer and of methods for staying informed of activities within the country park.	Not available at all times due to school and work commitments, this will be addressed through scheduling family events at weekends or during holidays. Often busy so clear information needs to be provided to this group. o support activity.
People with a disability	Given some of the barriers outlined in the Boxmoor Trust report, it would be good to engage this audience and facilitate better access. In addition to this we would like to engage visitors with learning disabilities and for the site to be beneficial to their wellbeing through increased health benefits brought about by exercise, socialising and engagement with nature.	This audience group has been part of the history of the country park and we aim to continue a strand of positive engagement and benefit to those with a disability through the activity programme and as an ongoing aim for the country park into the future.	Through learning disability focused activities such as Learning Disability Day and general activities of interest and benefit to this group. Also through volunteering and training.	Access to the site, to be addressed by repair and restoration of paths and physical elements, as well as buildings and facilities which are accessible. Long lead in times for enabling organisations to plan for visitors from this group to attend, due to red tape and processes. Encouragement of initial engagement through one off events as a lead in to also invite to volunteering and more regular events.
People with a mental health need	People with mental health needs benefit from engagement outdoors and we aim for the site to be beneficial to their wellbeing through increased health benefits brought about by exercise, socialising and engagement with nature.	The site has traditionally had a link with people who have mental health issues and some of the people who were at the hospitals may still have memories of the site in the past.	Through mental health awareness activities connected with Mental Health Awareness Week, and via volunteering and training.	Lack of positive engagement and support to attend the site. Key to enable engagement will be good communication and accessing via established groups for attendance to themed events such as those to be offered during Mental Health Awareness Week.

**Appendices G**  
**Essential Reading**

# National Lottery Heritage Fund Activity Plan and Conservation Plan

<b>Target Audience</b>	<b>Rationale</b>	<b>Why this audience is important</b>	<b>How we will engage this audience</b>	<b>Barriers for this audience and how resolved</b>
Older Visitors	There are currently high proportions of older visitors in Abbots Langley, and from the Audience Finder tool we can see that some of the older people in the catchment have an interest in heritage. The project also aims to attract more older visitors in order to assist in enabling them to live a healthier more active lifestyle through use of the country park.	<p>Given that many within this audience type have an overview historically of the Leavesden site, it is key for the project that they are engaged. They will be invaluable in terms of sharing knowledge of the site's history across generations.</p> <p>This audience is also important because there are valuable gains to be made in terms of their overall health if they are helped to be more active through engagement in the project.</p>	Through the heritage activities and targeted exercise activities through the outdoor gym. They will also be engaged as part of the Oral history project.	<p>Possible digital barriers to being informed about the park, so plans for promotion of the project include more traditional methods such as community newsletters as well.</p> <p>Access to the site, to be addressed by repair and restoration of paths and physical elements, as well as buildings and facilities which are accessible. Provision of the Heritage Wildlife Centre.</p>
People with a disability	Given some of the barriers outlined in the Boxmoor Trust report, it would be good to engage this audience and facilitate better access. In addition to this we would like to engage visitors with learning disabilities and for the site to be beneficial to their wellbeing through increased health benefits brought about by exercise, socialising and engagement with nature.	This audience group has been part of the history of the country park and we aim to continue a strand of positive engagement and benefit to those with a disability through the activity programme and as an ongoing aim for the country park into the future.	Through learning disability focused activities such as Learning Disability Day and general activities of interest and benefit to this group. Also through volunteering and training.	<p>Access to the site, to be addressed by repair and restoration of paths and physical elements, as well as buildings and facilities which are accessible.</p> <p>Long lead in times for enabling organisations to plan for visitors from this group to attend, due to red tape and processes. Encouragement of initial engagement through one off events as a lead in to also invite to volunteering and more regular events.</p>



## National Lottery Heritage Fund Activity Plan and Conservation Plan

Target Audience	Rationale	Why this audience is important	How we will engage this audience	Barriers for this audience and how resolved
Special interest	Local residents and their families and predecessors have in different capacities had a connection to the old buildings and land which made up Leavesden Country Park before it was designated as such. This category recognises the ongoing relationship these groups may wish to retain with the park and includes key groups such as former hospital workers, patients or trainees, and those who worked at the aerodrome site in its varying forms.	In order to create cohesion around the heritage and future of the park, it is vital that we engage those who already have a connection and love for the area. Their experiences and engagement will be the base upon which the ongoing story of the country park is told. Excluding this group would mean a loss of local cultural heritage.	These audiences will be engaged through the various heritage activities such as the Shared Heritage event and heritage trails outlined in the Action Plan, and in particular in the oral history project..	Previous negative memories of the site, to be resolved by offering activities linked to the heritage features which emphasis positive elements and through engaging them to share stories as part of the Oral History project in a sensitive manner.w

### Conservation Plan

The full conservation plan can be viewed on the Council's website.

### Objectives of the Conservation Management Plan

The Conservation Management Plan was commissioned by Three Rivers District Council to inform the development of detailed design and activity proposals as part of a National Lottery Heritage Fund Bid under the Heritage Grants programme which commenced in 2017 until October 2021.

A Conservation Management Plan assesses and sets out in summary what is important about the landscape and significance based upon readily available information. The information gathered is then considered in an assessment of

cultural significance, for the site as a whole and for its various parts, with a statement of significance. The plan is designed to inform the conservation, repair, use, management and future improvements of the Park.

It includes an appraisal of the heritage value of the designed landscape, largely in the context of it being the grounds of the former Metropolitan Asylum for Imbeciles which was built between 1868-70 and known later as Leavesden Asylum. The report examines the main conservation-related issues and outlines guidelines for the future management of the site. It is used in conjunction with the Management and Maintenance Plan and the Activity Plan.

Based on all of this information and opinion, the Management and

Maintenance Plan and Activity Plan, have been established to inform the conservation, repair, management and use of the feature according to best conservation practice.

The Plan has involved considerable engagement with the two Historical Associations and other members of the Steering Group who are extremely knowledgeable and active in conserving their local heritage.

### Understanding the Heritage

The Country Park was formerly part of the grounds of Metropolitan Asylum for Imbeciles which was built between 1868-70 and known later as Leavesden Asylum. Today the Country Park consists of four connected sites. North and South Park form the main park area and are divided by College

## National Lottery Heritage Fund Activity Plan and Conservation Plan

Road. The Horses' Field is located to the west of Langley Lane and East Lane Cemetery at the northern end of the site.

The Country Park is a well-used and valued green space in Abbots Langley, used by a wide range of local people including residents from Abbots Langley and in particular adjacent housing, local schools and nearby businesses including Warner Bros. Studios Leavesden.

As well as being important for wildlife and biodiversity the Country Park is an important recreational green space linking to countryside to the north. The Country Park is open all year with two free car parks at the northern end of the site. The Park provides two main play areas – one outside Leavesden HIVE and one in the Horses' Field, tennis courts, outdoor gym and the Multi Use Games Area (MUGA), a football pitch and a range of opportunities for informal recreation or play.

Apart from the tennis courts and MUGA, which can be booked through the YMCA, the facilities are freely available.

### **Conservation of wildlife – Natural Heritage**

The site comprises a mosaic of habitats: amenity grassland, semi-improved grassland, scattered trees, woodland, scrub, wildflower meadows, two orchards and

hedgerows.

### **Trees**

Leavesden Country Park includes ornamental trees in parkland and areas of woodland to the north. Three Tree Preservation Orders cover the site. A targeted individual tree survey was carried out in two key areas as part of the National Lottery Heritage Fund project and forms the basis of the conservation section in the Management and Maintenance Plan.

### **Woodlands**

The main woodland blocks are found in the north of the site and consist of small plantations although it is not known how much was planted or whether the majority is a result of natural regeneration. The woodland structure is dominated by Sycamore with occasional Oak and Silver Birch. There is very little under storey, where it does exist it comprises of Hawthorn and Elder. Natural regeneration consists of Ash, Holly and occasional Yew. The perimeter of the site is formed by mixed plantations containing a variety of species including Field Maple, Guelder Rose, Hawthorn and Hazel.

### **Grasslands**

The ground flora is dominated by Bramble with Nettle. Some interest does exist along the woodland edge where Red Campion and Male Fern persist. Wild Garlic, Snowdrop, Bluebell and Wood Anemone have

been introduced site wide and will continue to do so as part of both the Activity Plan and the Management and Maintenance Plan.

### **Wildlife**

The site has potential to support a range of protected species, notably bats and reptiles and had limited potential to support Great Crested Newts. Twenty-seven species of bird were recorded within the site which reflected a typical Country Park assemblage for late winter, and there is limited potential for the site to support specially protected breeding bird species which were noted from the data search. The site is very likely to support Hedgehogs habitats but no signs of badger were recorded during the initial survey.

Actions to support the conservation of the natural heritage, wildlife, trees and plants are shown in the Management and Maintenance Plan.

### **Activities and Events - Social Heritage**

The Park is also an important venue for a range of events and activities including wildlife, history walks and talks, heritage open days, sporting events and community activities.

All of these are detailed in the Activity Plan which are frequently reviewed and updated to reflect the current need.

## National Lottery Heritage Fund Activity Plan and Conservation Plan

### Facilities –

#### Restoration of Built Heritage

Restored Heritage facilities include:

- **Leavesden HIVE building** – this provides a base for both the Park Ranger for wildlife education and a hub for Leavesden Hospitals Heritage Association for heritage activities.
- **Restored Orphanage Railings** – local craftsmen have reinstated the railings on the south side entrance to the park with authentic pier caps to match the existing original railings.
- **Edwardian Garden Steps** – the steps and handrails have been restored to include fir cone shaped finials to reflect the Alexander Mackenzie Edwardian Design
- **Font** – restored the existing structure and its surroundings to its former state as was used when the hospitals were open.
- **East Lane Cemetery** – restoration of the Lychgate to its former glory as an imposing entrance, reinstated pathways, lifted the tree canopy, restored the grave markers, reset the grave stones, and renewed the centrally planted and grave marked area to include a memorial wall with memorial plaques.
- **Site Wide Interpretation Boards and site maps** – to enhance the visitor experience, site maps provide walking routes to ensure they can visit all the heritage features with the interpretation boards providing important historical, conservation and wildlife information.
- **Covid-19 Snake** – for future heritage, an individual stone based snake sculpture set in a pathway, has been created by the local community to mark the impact of the pandemic and record this moment in time.
- **Site wide Street furniture** – this includes benches that are in keeping with the Edwardian Garden and sympathetically designed new benches and picnic furniture across the site.



*"The real voyage of discovery consists not in seeking new landscapes, but in having new eyes"*

*Marcel Proust - 1871-1922 - French Novelist*